

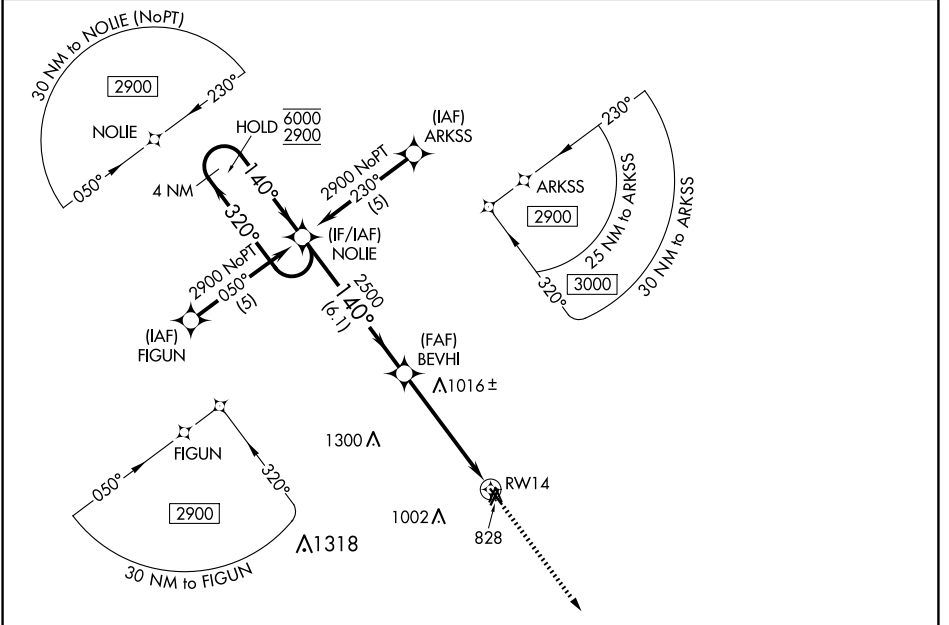
APP CRS	Rwy Idg	3899
140°	TDZE	783
	Apt Elev	783

RNAV (GPS) RWY 14

CHILLICOTHE MUNI (CHT)

RNP APCH.	Rwy 14 helicopter visibility reduction below 1 SM NA. Procedure NA at night. When local altimeter setting not received, use Kansas City Intl altimeter setting and increase all MDA 200 feet.	MISSED APPROACH: Climb to 2900 direct TUDEE and hold.
-----------	--	---

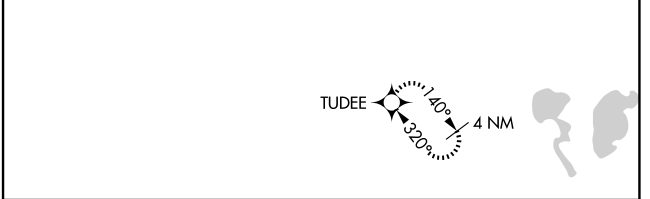
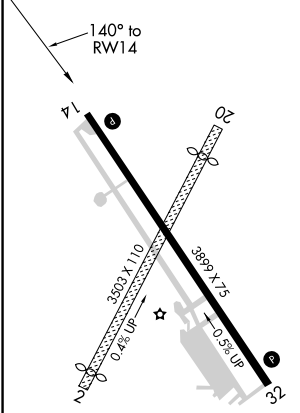
AWOS-3 118.175	KANSAS CITY CENTER 125.25 235.975	UNICOM 122.8 (CTAF)
--------------------------	---	-------------------------------



NC-3, 15 MAY 2025 to 12 JUN 2025

NC-3, 15 MAY 2025 to 12 JUN 2025

ELEV 783	TDZE 783
----------	----------



4 NM Holding Pattern	NOLIE	BEVHI	2900	TUDEE
6000 2900	320° 140°	140°	3.04° TCH 44	2500
	6.1 NM	5.2 NM		

MIRL Rwy 14-32	
REIL Rwy 14 and 32	

CATEGORY	A	B	C	D
LNAV MDA	1280-1	497 (500-1)		NA