


RED OAK, IOWA

AL-6051 (FAA)

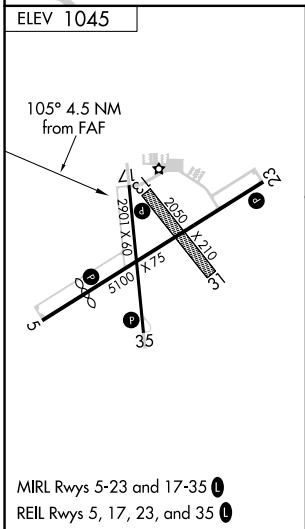
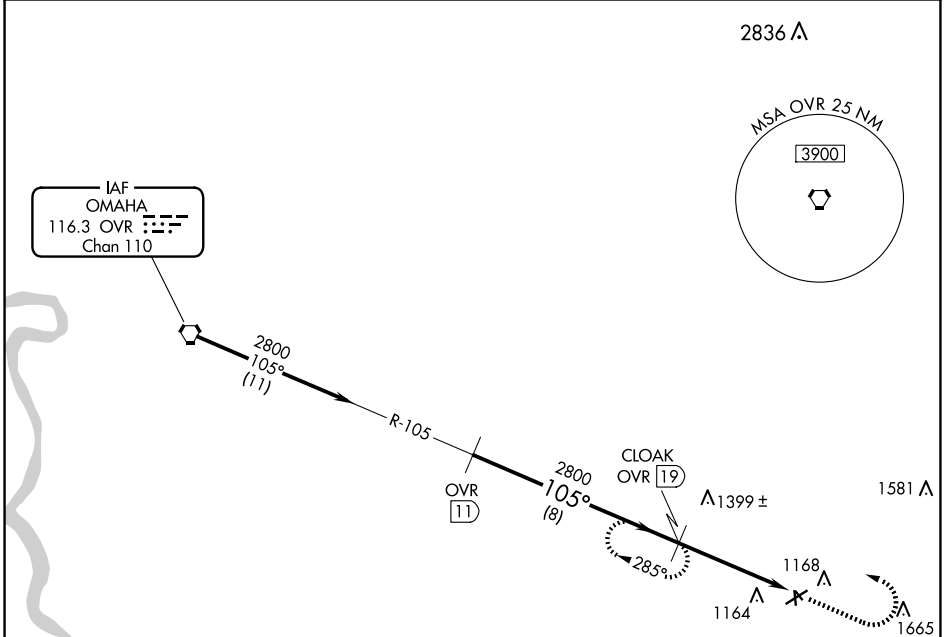
21084

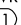


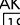
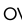
VORTAC OVR 116.3 Chan 110	APP CRS 105°	Rwy Idg TDZE Apt Elev	N/A N/A 1045
---	------------------------	-----------------------------	---

VOR/DME-A RED OAK MUNI (RDK)

 Circling NA to Rwys 13 and 31.
 MISSED APPROACH: Climb to 2800 then left turn via OVR R-105 to CLOAK/19 DME and hold.

AWOS-3P 123.925	OMAHA APP CON 124.5 263.0	UNICOM 122.8 (CTAF) 
---------------------------	-------------------------------------	---



Procedure Turn NA	OVR 	CLOAK OVR 	2800		CLOAK OVR 
	2800	105°	2800	105°	OVR 
8 NM		4.5 NM			
CATEGORY	A	B	C	D	
CIRCLING	1660-1 615 (700-1)	1740-1¼ 695 (700-1¼)	NA		

RED OAK, IOWA
Amdt 5A 25MAR21

41°01'N-95°16'W

RED OAK MUNI (RDK) VOR/DME-A

NC-3, 15 MAY 2025 to 12 JUN 2025

NC-3, 15 MAY 2025 to 12 JUN 2025