

(ZACHH4.ZACHH) 24305

AL-6039 (FAA)

DALLAS-FORT WORTH INTL (DFW)

# ZACHH FOUR DEPARTURE (RNAV)

DALLAS-FORT WORTH, TEXAS

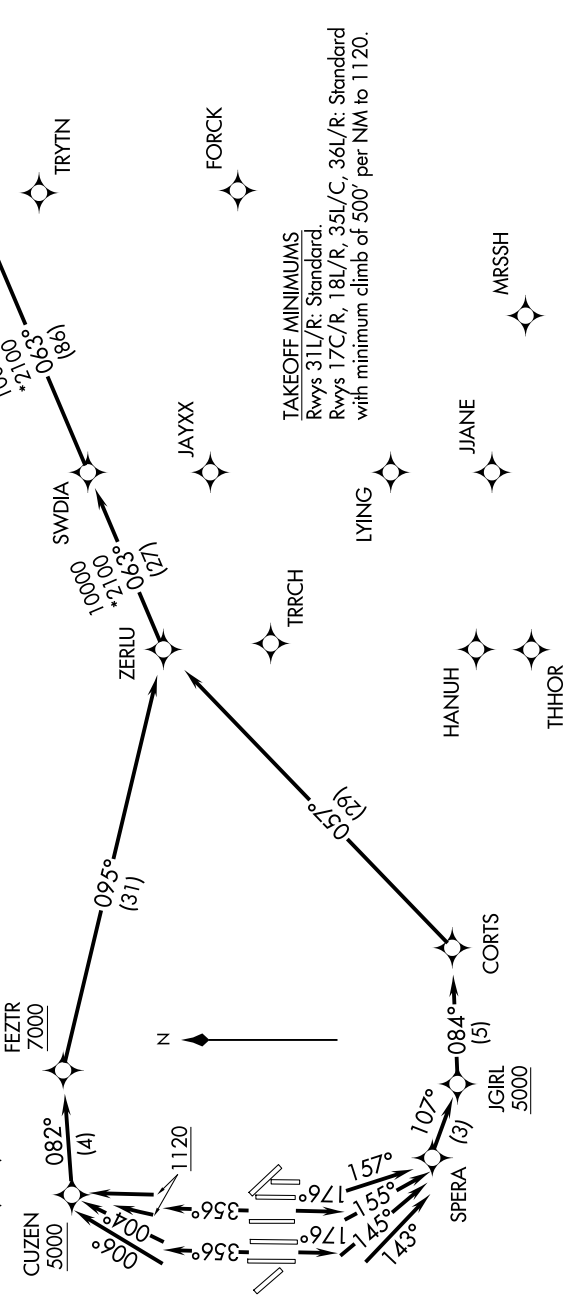
SC-2, 15 MAY 2025 to 12 JUN 2025

LONE STAR DEP CON  
118.55 290.35  
D-ATIS DEP  
135.925  
CINC DEL  
128.25  
CPDLC  
GND CON  
121.65 121.8 (EAST)  
121.85 (WEST)  
DFW TOWER  
126.55 127.5 (EAST)  
124.15 134.9 (WEST)

RNAV 1 - DME/DME/IRU or GPS.  
RADAR required.

**TOP ALTITUDE:**  
RWYS 31L/R: 5000  
RWYS 17C/R, 18L/R,  
35L/C, 36L/R: 10000

NOTE: For use by turbojet aircraft only.  
NOTE: Non-RNAV capable props: file and expect DALLAS or GARLAND DEPARTURE.  
NOTE: RNAV capable props: file and expect the SWABR RNAV SID.



**TAKEOFF MINIMUMS**  
Rwys 31L/R: Standard.  
Rwys 17C/R, 18L/R, 35L/C, 36L/R: Standard with minimum climb of 500' per NM to 1120.

(CONTINUED ON FOLLOWING PAGE)

NOTE: Chart not to scale.

# ZACHH FOUR DEPARTURE (RNAV)

(ZACHH4.ZACHH) 08SEP22

DALLAS-FORT WORTH, TEXAS

DALLAS-FORT WORTH INTL (DFW)

SC-2, 15 MAY 2025 to 12 JUN 2025