

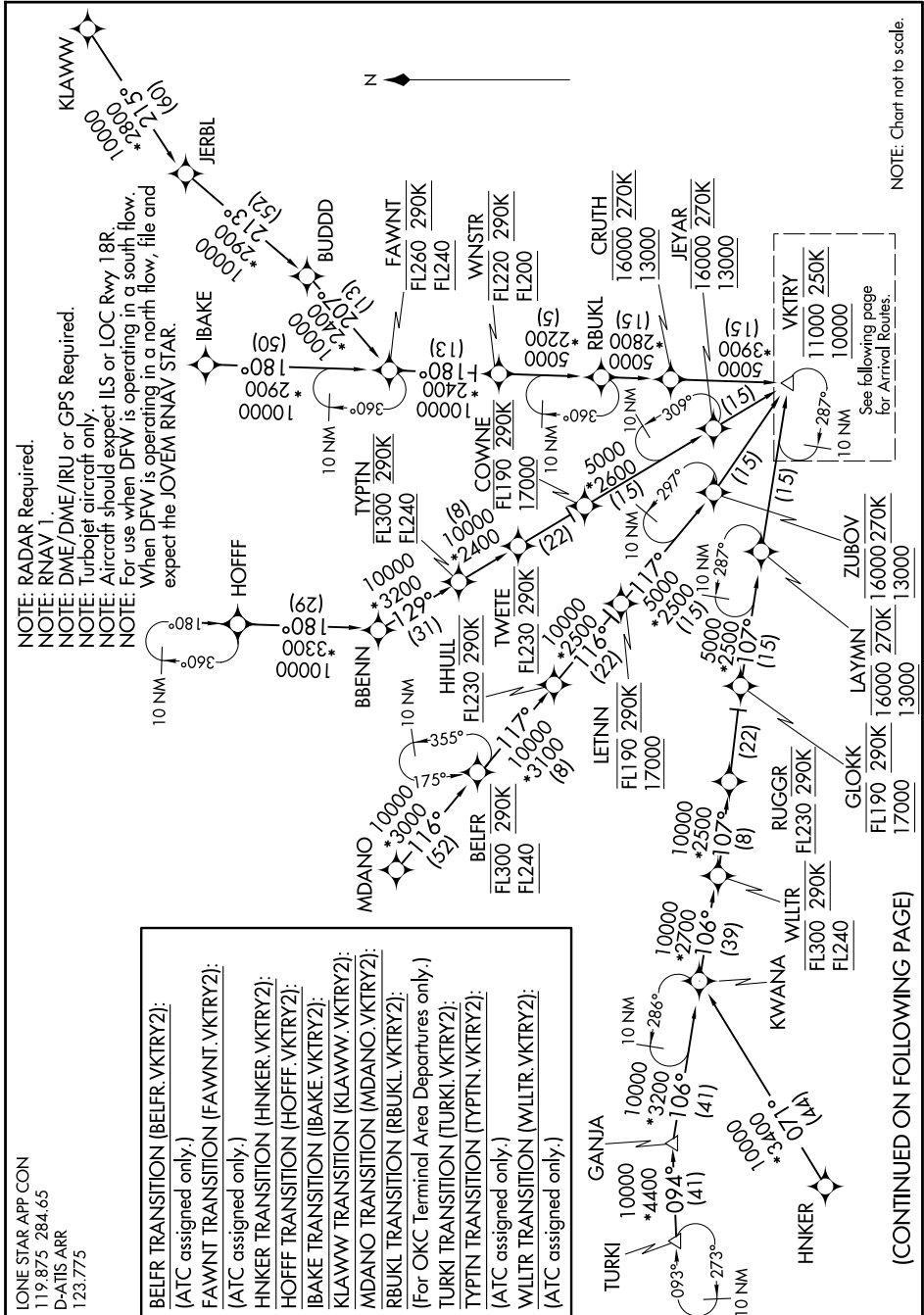
VKTRY TWO ARRIVAL (RNAV) Transition Routes

SC-2, 15 MAY 2025 to 12 JUN 2025

IONE STAR APP CON
119.875 284.65
D-ATIS ARR
123.775

- BELFR TRANSITION (BELFR.VKTRY2):
(ATC assigned only.)
- FAWNT TRANSITION (FAWNT.VKTRY2):
(ATC assigned only.)
- HNKER TRANSITION (HNKER.VKTRY2):
(ATC assigned only.)
- HOFF TRANSITION (HOFF.VKTRY2):
(ATC assigned only.)
- IBAKE TRANSITION (IBAKE.VKTRY2):
(ATC assigned only.)
- KLAWW TRANSITION (KLAWW.VKTRY2):
(ATC assigned only.)
- MDANO TRANSITION (MDANO.VKTRY2):
(ATC assigned only.)
- RBUKL TRANSITION (RBUKL.VKTRY2):
(ATC assigned only.)
- (For OKC Terminal Area Departures only.)
- TURKI TRANSITION (TURKI.VKTRY2):
(ATC assigned only.)
- TYPTN TRANSITION (TYPTN.VKTRY2):
(ATC assigned only.)
- WLLTR TRANSITION (WLLTR.VKTRY2):
(ATC assigned only.)

NOTE: RADAR Required.
 NOTE: RNAV 1.
 NOTE: DME/DME/IRU or GPS Required.
 NOTE: Turbojet aircraft only.
 NOTE: Aircraft should expect ILS or LOC Rwy 18R.
 NOTE: Aircraft is operating in a south flow.
 NOTE: For use when DFW is operating in a north flow, file and expect the JOVEW RNAV STAR.



NOTE: Chart not to scale.

(CONTINUED ON FOLLOWING PAGE)

SC-2, 15 MAY 2025 to 12 JUN 2025

VKTRY TWO ARRIVAL (RNAV) Transition Routes