

WAAS CH 4000B W17B	APP CRS 176°	Rwy Idg 8500 TDZE 545 Apt Elev 607
---------------------------------	------------------------	---------------------------------------------------

RNAV (GPS) RWY 17L

DALLAS-FORT WORTH INTL (DFW)

For uncompensated Baro-VNAV systems, LNAV/VNAV NA below -5°C (23°F) or above 54°C (130°F). DME/DME RNP-0.3 NA. Simultaneous approach authorized with Rwy 17C/R and Rwy 18L/R. LNAV procedure NA during simultaneous operations. Use of FD or AP providing RNAV track guidance required during simultaneous operations.

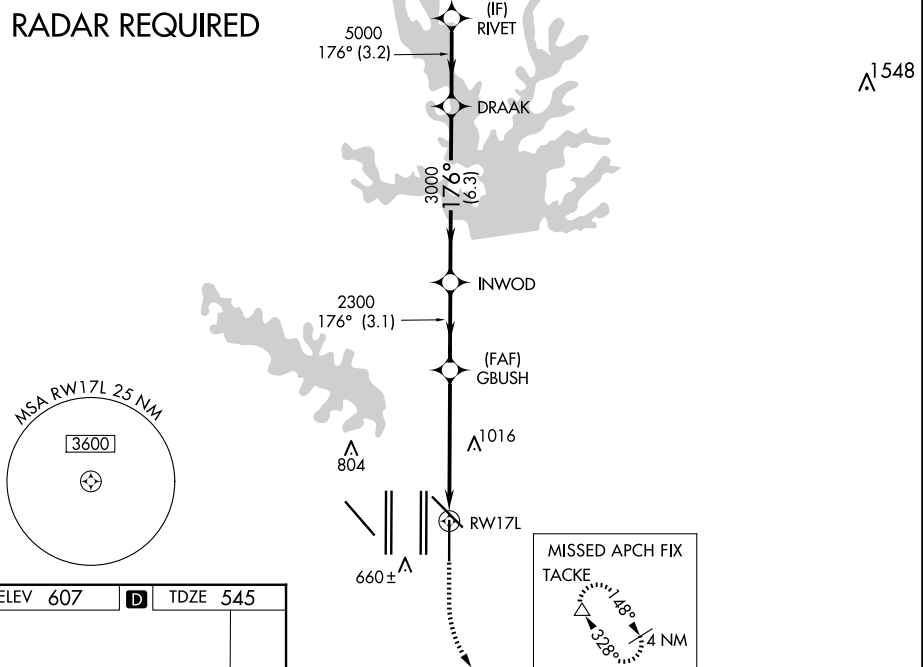
ALSF-2



MISSED APPROACH: Climb to 1020 then climbing left turn to 3000 direct TACKE and hold.

D-ATIS ARR 123.775 DEP 135.925	LONE STAR APP CON 119.4	DFW TOWER 126.55 127.5 EAST 124.15 134.9 WEST	GND CON 121.65 121.8 EAST 121.85 WEST	CLNC DEL 128.25	CPDLC
----------------------------------------------------	-----------------------------------	-------------------------------------------------------------------	-----------------------------------------------------------	---------------------------	-------

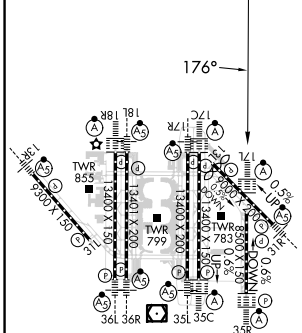
RADAR REQUIRED



SC-2, 15 MAY 2025 to 12 JUN 2025

SC-2, 15 MAY 2025 to 12 JUN 2025

ELEV 607	D	TDZE 545
-----------------	----------	-----------------



HIRL all Rwys
REIL Rwys 13L and 31L
TDZ/CL all Rwys except 13L and 31L

1020	3000	TACKE	VGSi and RNAV glidepath not coincident (VGSi Angle 3.00/TCH 77).		
*LNAV only.		GBUSH	INWOD	DRAAK	RIVET
*2 NM to RWY 17L		2300	3000	5000	5000
-2 NM		3.4 NM	3.1 NM	6.3 NM	3.2 NM
CATEGORY	A	B	C	D	
LPV DA	745/18		200 (200-½)		
LNAV/VNAV DA	1063/60		518 (500-1¼)		
LNAV MDA	1240/24	695 (700-½)		1240-1½	695 (700-1½)