

(KNEAD.PAWLZ3) 24305

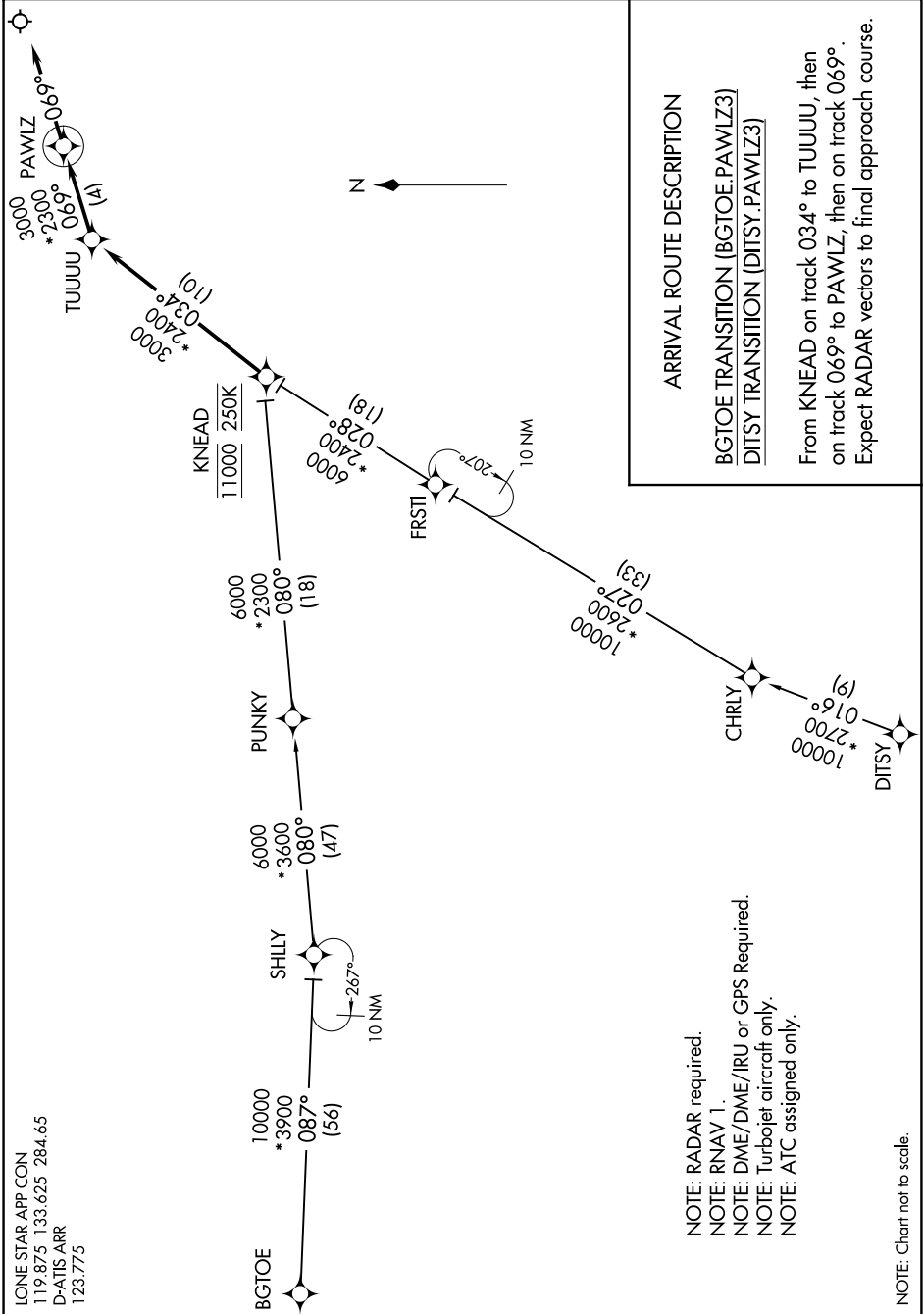
# PAWLZ THREE ARRIVAL (RNAV)

AL-6039 (FAA)

DALLAS-FORT WORTH INTL (DFW)  
DALLAS-FORT WORTH, TEXAS

SC-2, 15 MAY 2025 to 12 JUN 2025

LONE STAR APP CON  
119.875 133.625 284.65  
D-ATIS ARR  
123.775



### ARRIVAL ROUTE DESCRIPTION

**BGTOE TRANSITION (BGTOE.PAWLZ3)**  
**DITSY TRANSITION (DITSY.PAWLZ3)**

From KNEAD on track 034° to TUUUU, then on track 069° to PAWLZ, then on track 069°. Expect RADAR vectors to final approach course.

- NOTE: RADAR required.
- NOTE: RNAV 1.
- NOTE: DME/DME/IRU or GPS Required.
- NOTE: Turbojet aircraft only.
- NOTE: ATC assigned only.

NOTE: Chart not to scale.

SC-2, 15 MAY 2025 to 12 JUN 2025

# PAWLZ THREE ARRIVAL (RNAV)

(KNEAD.PAWLZ3) 31MAR16

DALLAS-FORT WORTH, TEXAS  
DALLAS-FORT WORTH INTL (DFW)