

LOWGN EIGHT DEPARTURE (RNAV)

DALLAS-FORT WORTH, TEXAS

TOP ALTITUDE:
RWYS 31L/R: 5000
RWYS 17C/R, 18L/R, 35L/C, 36L/R: 10000

LONE STAR DEP CON
 118.55 290.35 (Rwys 17R/C)
 126.47 363.15 (Rwys 18L/R)
 125.12 353.95 (Rwys 35L/C and 36L/R)
 D-ATIS DEP
 135.925
 CLNC DEL
 128.25
 CPDLC
 GND CON
 121.65 121.8 (EAST)
 121.85 (WEST)
 DFW TOWER
 126.55 127.5 (EAST)
 124.15 134.9 (WEST)

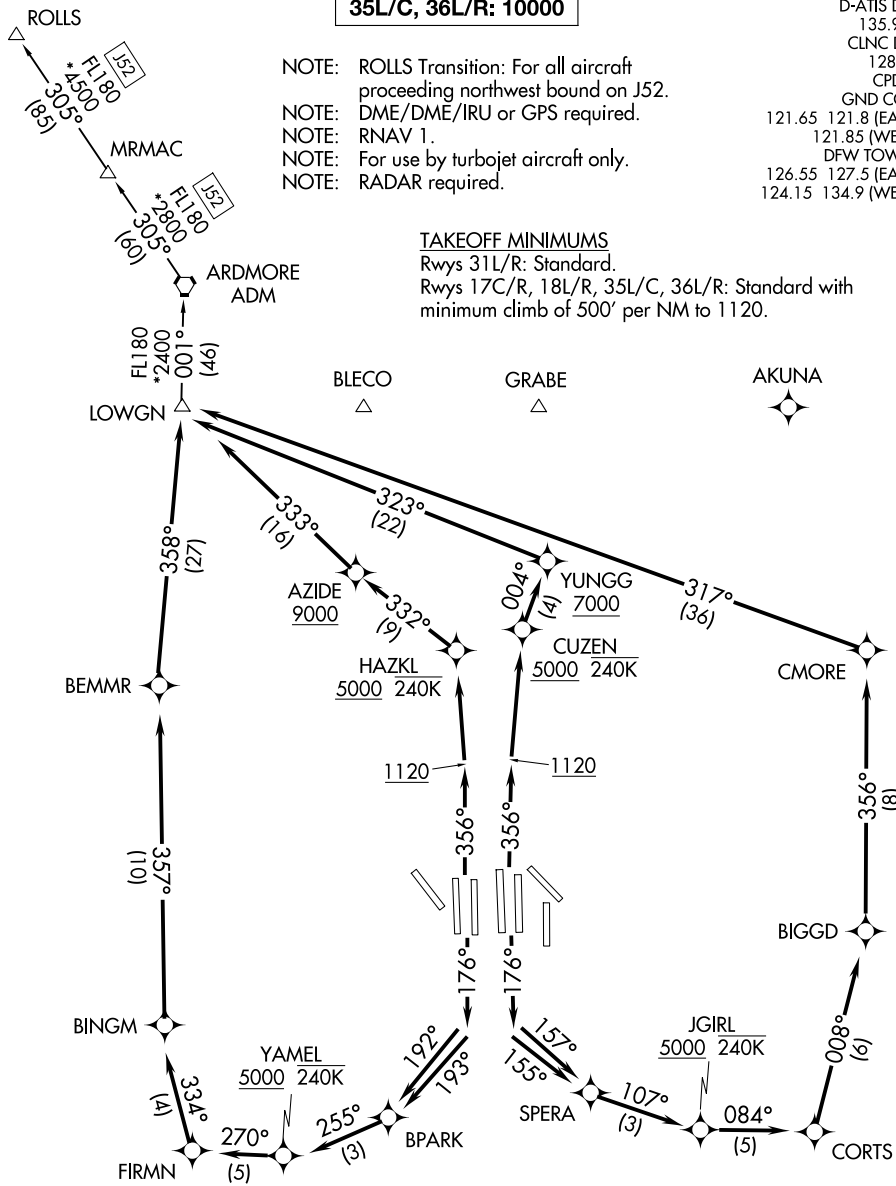
- NOTE: ROLLS Transition: For all aircraft proceeding northwest bound on J52.
 NOTE: DME/DME/IRU or GPS required.
 NOTE: RNAV 1.
 NOTE: For use by turbojet aircraft only.
 NOTE: RADAR required.

TAKEOFF MINIMUMS

Rwys 31L/R: Standard.
 Rwys 17C/R, 18L/R, 35L/C, 36L/R: Standard with minimum climb of 500' per NM to 1120.

SC-2, 15 MAY 2025 to 12 JUN 2025

SC-2, 15 MAY 2025 to 12 JUN 2025



NOTE: Chart not to scale.

(CONTINUED ON FOLLOWING PAGE)

LOWGN EIGHT DEPARTURE (RNAV)

(LOWGN8.LOWGN) 29MAR18

DALLAS-FORT WORTH, TEXAS
DALLAS-FORT WORTH INTL (DFW)