

KUSSO ONE DEPARTURE (RNAV)

DALLAS-FORT WORTH, TEXAS

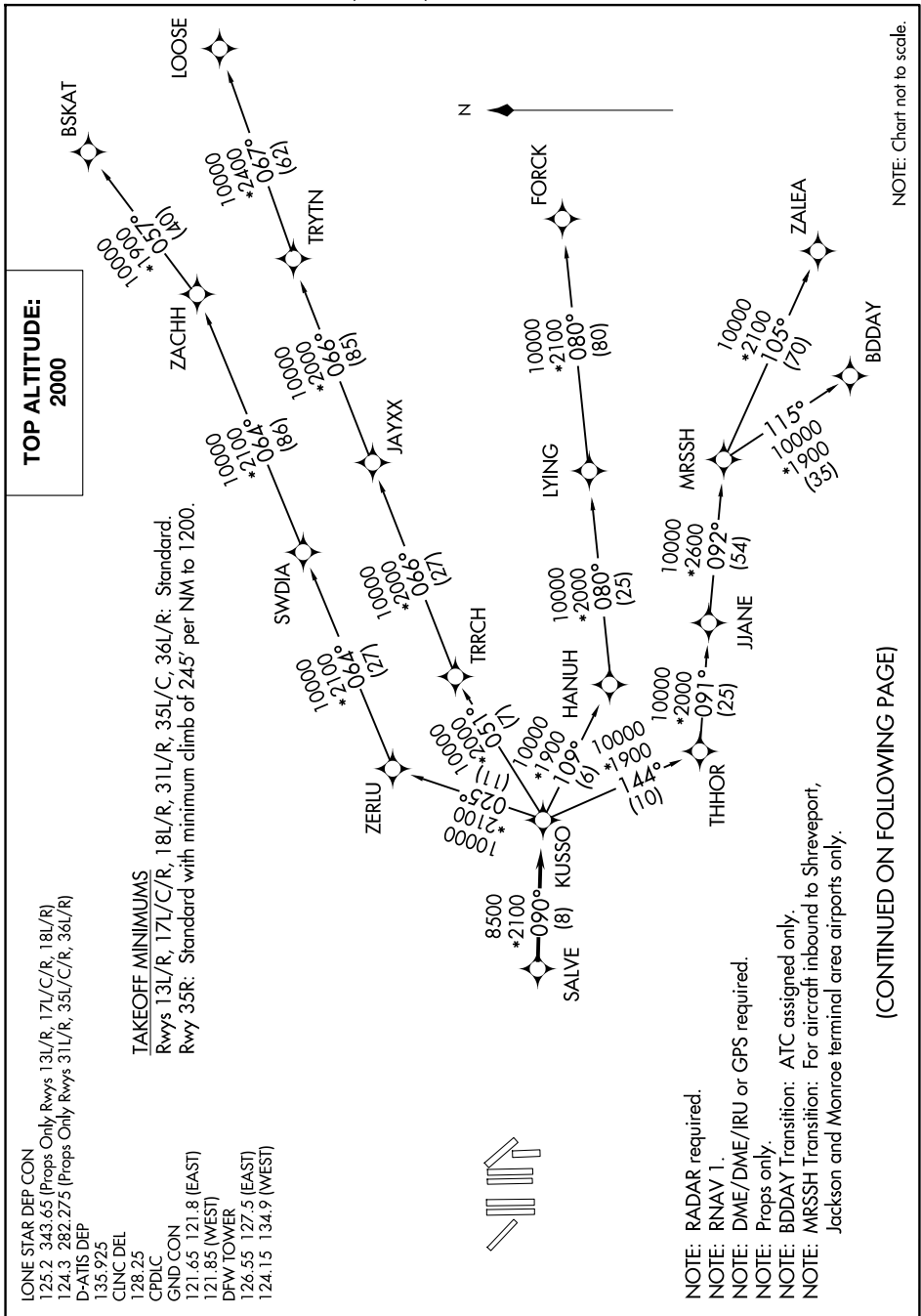
SC-2, 15 MAY 2025 to 12 JUN 2025

- LONE STAR DEP CON
- 125.2 343.65 (Props Only Rwy 13L/R, 17L/C/R, 18L/R)
- 124.3 282.275 (Props Only Rwy 31L/R, 35L/C/R, 36L/R)
- D-ATIS DEP
- 135.925
- CLNC DEL
- 128.25
- CPDC
- GNDC CON
- 121.65 121.8 (EAST)
- 121.65 (WEST)
- DFW TOWER
- 126.55 127.5 (EAST)
- 124.15 134.9 (WEST)

TAKEOFF MINIMUMS

Rwys 13L/R, 17L/C/R, 18L/R, 31L/R, 35L/C, 36L/R: Standard.
 Rwy 35R: Standard with minimum climb of 245' per NM to 1200.

TOP ALTITUDE:
2000



NOTE: RADAR required.

NOTE: RNAV 1.

NOTE: DME/DME/IRU or GPS required.

NOTE: Props only.

NOTE: BDDAY Transition: ATC assigned only.

NOTE: MRSSH Transition: For aircraft inbound to Shreveport, Jackson and Monroe terminal area airports only.

(CONTINUED ON FOLLOWING PAGE)

NOTE: Chart not to scale.

SC-2, 15 MAY 2025 to 12 JUN 2025

KUSSO ONE DEPARTURE (RNAV)

(KUSSO1.KUSSO) 24MAR22

DALLAS-FORT WORTH, TEXAS

DALLAS-FORT WORTH INTL (DFW)