

KINGDOM FIVE DEPARTURE

SC-2, 15 MAY 2025 to 12 JUN 2025

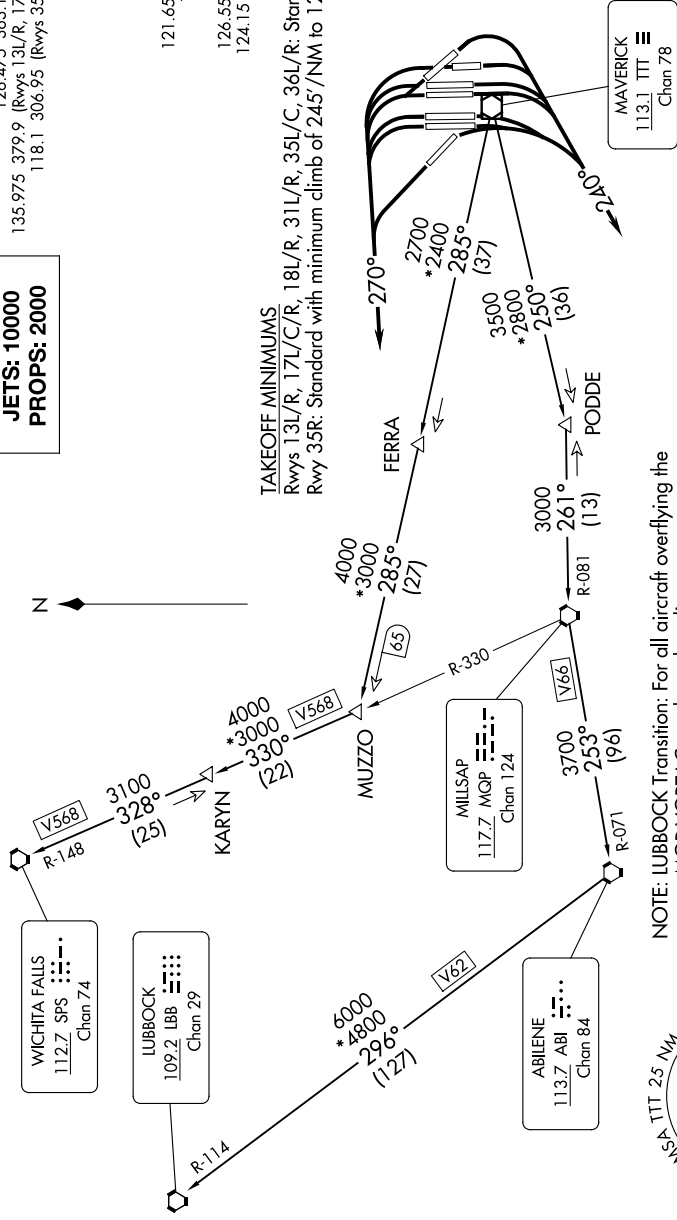
LONE STAR DEP CON
 126.475 363.15 (JETS ONLY)
 135.975 379.9 (Rwys 13L/R, 17L/C/R, 18L/R)
 118.1 306.95 (Rwys 35L/C/R, 36L/R)
 D-ATIS
 135.925
 CLNC DEL
 128.25
 CPDLC
 GND CON
 121.65 121.8 (EAST)
 121.85 (WEST)
 DFW TOWER
 126.55 127.5 (EAST)
 124.15 134.9 (WEST)

TOP ALTITUDE:
JETS: 10000
PROPS: 2000

RADAR and DME required.



TAKEOFF MINIMUMS
 Rwys 13L/R, 17L/C/R, 18L/R, 31L/R, 35L/C, 36L/R: Standard.
 Rwy 35R: Standard with minimum climb of 245'/NM to 1200.



- NOTE: LUBBOCK Transition: For all aircraft overlying the MQP VORTAC westbound or direct.
- NOTE: MILLSAP Transition: For all aircraft overlying the MQP VORTAC westbound or direct.
- NOTE: PODDE Transition: ATC assigned.
- NOTE: WICHITA FALLS Transition: For all aircraft landing within the Wichita Falls terminal area or overlying the SPS VORTAC.
- NOTE: For all aircraft requesting 17000 and below.
- NOTE: Dallas-Fort Worth Intl Departures: Do not exceed 240K until leaving 5000.

NOTE: Chart not to scale.

(CONTINUED ON FOLLOWING PAGE)

KINGDOM FIVE DEPARTURE

SC-2, 15 MAY 2025 to 12 JUN 2025