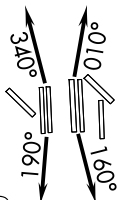


# JOE POOL SEVEN DEPARTURE

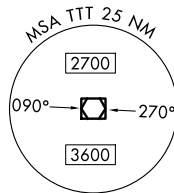
**TOP ALTITUDE:**  
**RWYS 13L/R, 17L/C/R, 18L/R,**  
**35L/C/R, 36L/R: 10000**  
**RWYS 31L/R: 5000**

LONE STAR DEP CON  
125.125 353.95 (Rwys 17C/R, 18L/R)  
126.475 363.15 (Rwys 36L/R)  
118.55 290.35 (Rwys 35L/C)  
D-ATIS DEP 135.925  
CLNC DEL 128.25  
CPDLC  
GND CON  
121.65 121.8 (EAST)  
121.85 (WEST)  
DFW TOWER  
126.55 127.5 (EAST)  
124.15 134.9 (WEST)



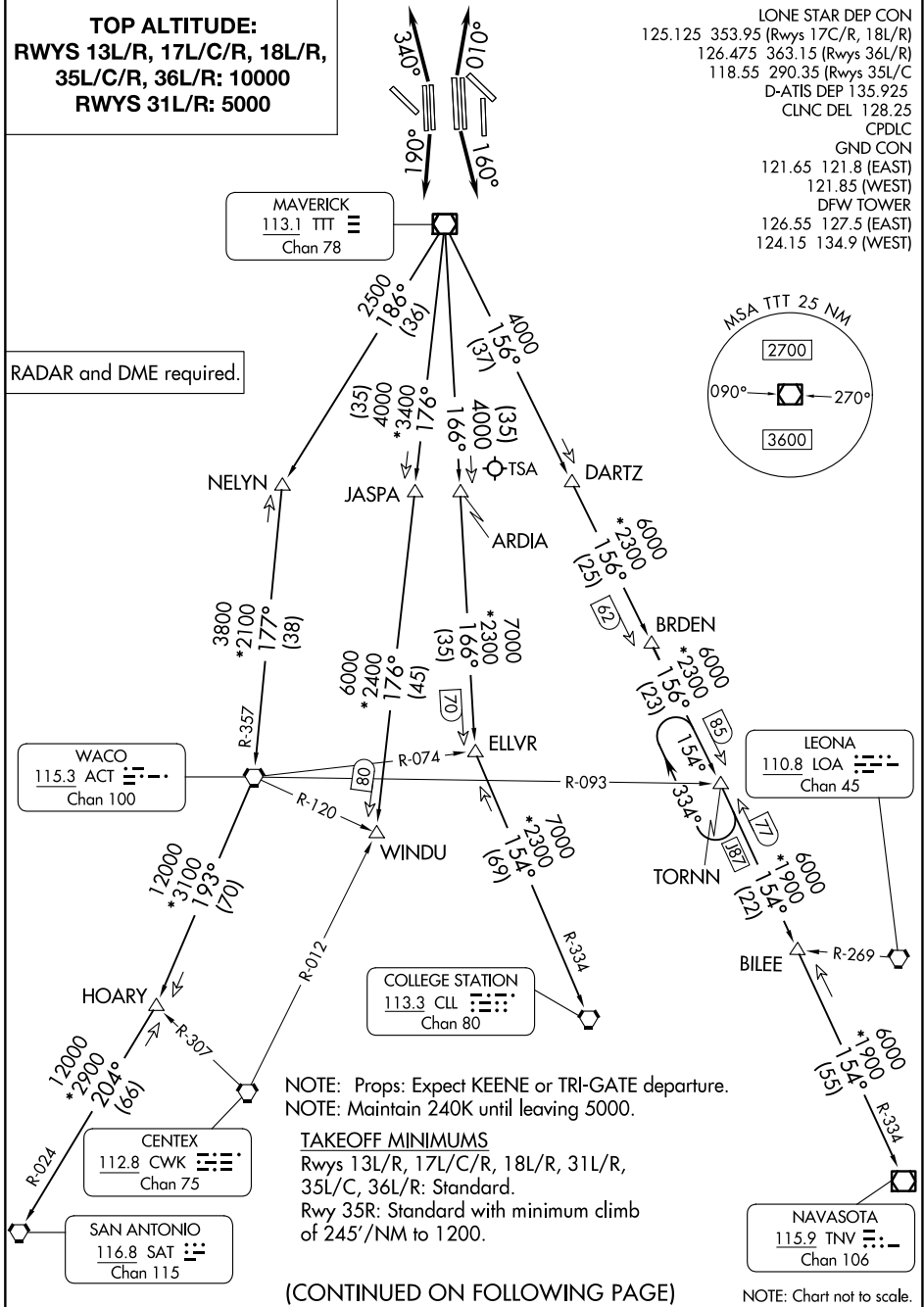
**MAVERICK**  
113.1 TTT  
Chan 78

RADAR and DME required.



SC-2, 15 MAY 2025 to 12 JUN 2025

SC-2, 15 MAY 2025 to 12 JUN 2025



NOTE: Props: Expect KEENE or TRI-GATE departure.  
NOTE: Maintain 240K until leaving 5000.

**TAKEOFF MINIMUMS**

Rwys 13L/R, 17L/C/R, 18L/R, 31L/R,  
35L/C, 36L/R: Standard.  
Rwy 35R: Standard with minimum climb  
of 245'/NM to 1200.

(CONTINUED ON FOLLOWING PAGE)

NOTE: Chart not to scale.

# JOE POOL SEVEN DEPARTURE