

(JASPA7.JASPA) 24305

AL-6039 (FAA)

DALLAS-FORT WORTH INTL (DFW)  
DALLAS-FORT WORTH, TEXAS

# JASPA SEVEN DEPARTURE (RNAV)

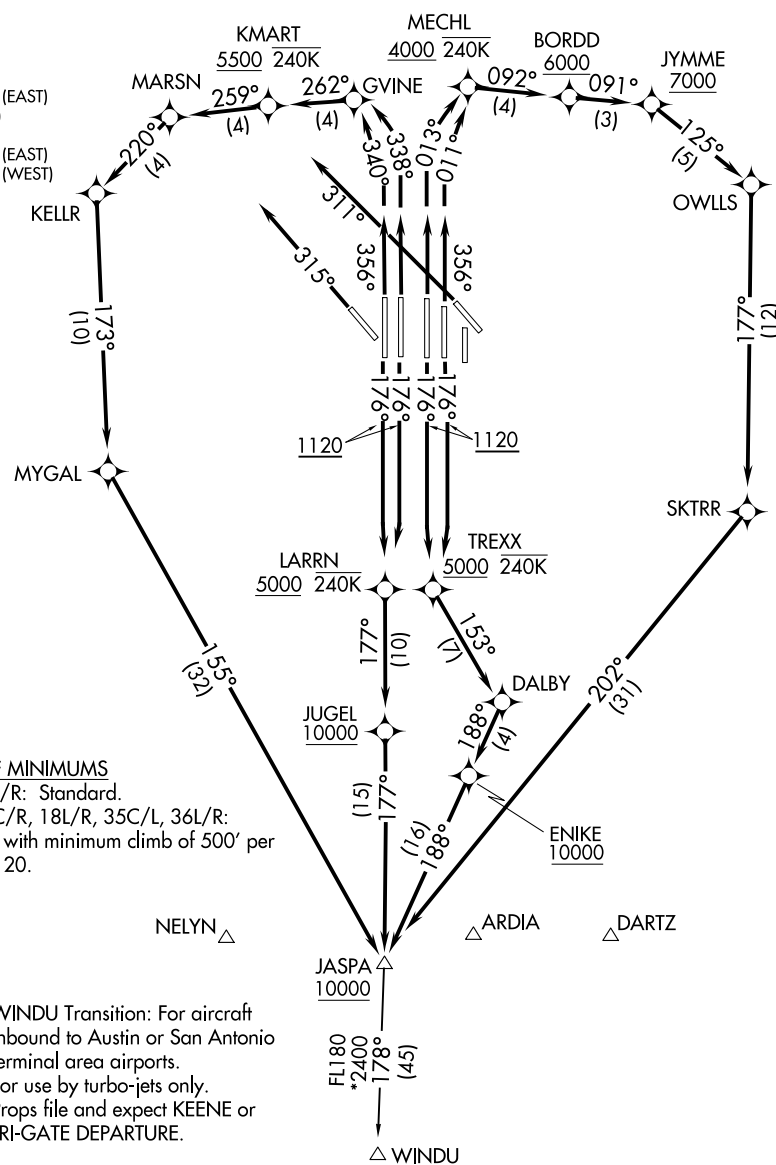
LONE STAR DEP CON  
 125.125 353.95 (Rwys 17C/R)  
 125.125 353.95 (Rwys 18L/R)  
 126.475 363.15 (Rwys 36L/R)  
 118.55 290.35 (Rwys 35L/C)  
 D-ATIS DEP  
 135.925  
 CLNC DEL  
 128.25  
 CPDLC  
 GND CON  
 121.65 121.8 (EAST)  
 121.85 (WEST)  
 DFW TOWER  
 126.55 127.5 (EAST)  
 124.15 134.9 (WEST)

RNAV 1- DME/DME/IRU or GPS.  
 RADAR required.

**TOP ALTITUDE:**  
**RWYS 13L/R, 17L/C/R, 10000**  
**18L/R, 35L/C/R, 36L/R: 10000**  
**RWYS 31L/R: 5000**

SC-2, 15 MAY 2025 to 12 JUN 2025

SC-2, 15 MAY 2025 to 12 JUN 2025



**TAKEOFF MINIMUMS**  
 Rwys 31L/R: Standard.  
 Rwys 17C/R, 18L/R, 35C/L, 36L/R:  
 Standard with minimum climb of 500' per  
 NM to 1120.

NOTE: WINDU Transition: For aircraft  
 inbound to Austin or San Antonio  
 terminal area airports.  
 NOTE: For use by turbo-jets only.  
 NOTE: Props file and expect KEENE or  
 TRI-GATE DEPARTURE.

(CONTINUED ON FOLLOWING PAGE)

NOTE: Chart not to scale.

# JASPA SEVEN DEPARTURE (RNAV)

(JASPA7.JASPA) 03NOV22

DALLAS-FORT WORTH, TEXAS  
DALLAS-FORT WORTH INTL (DFW)