

LOC/DME I-LWN 109.5 Chan 32	APP CRS 135°	Rwy Idg TDZE Apt Elev	9300 591 606
---	------------------------	-----------------------------	---

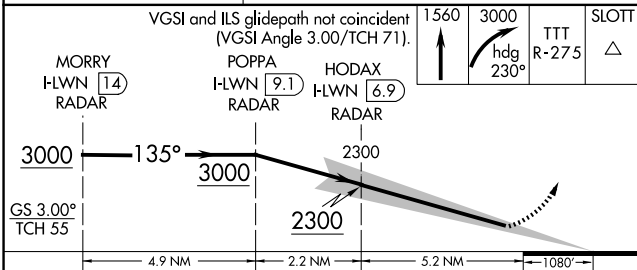
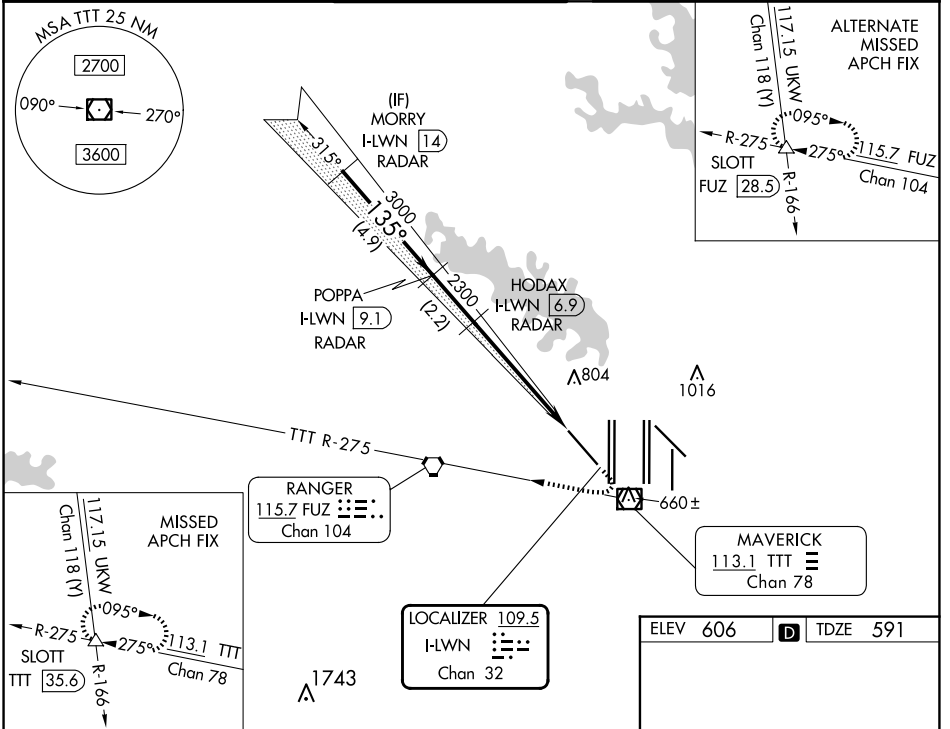
ILS Z RWY 13R (SA CAT I & II)

DALLAS-FORT WORTH INTL (DFW)

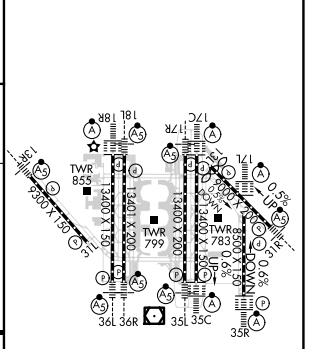
RADAR required for procedure entry.

SA Cat I: Requires specific OPSPEC, MSPEC, or LOA approval and use of HUD to DH. SA Cat II: Reduced lighting: Requires specific OPSPEC, MSPEC, or LOA approval and use of autoland or HUD to touchdown.

D-ATIS ARR 123.775 DEP 135.925	LONE STAR APP CON 133.15 118.1	DFW TOWER 126.55 127.5 EAST 124.15 134.9 WEST	GND CON 121.65 121.8 EAST 121.85 WEST	CLNC DEL 128.25	CPDLC
--	--	---	---	---------------------------	-------



ELEV 606	D	TDZE 591
----------	---	----------



CATEGORY	A	B	C	D
S-ILS 13R	SA CAT I	RA 149/14	150 DA 741	
S-ILS 13R	SA CAT II	RA 99/12	100 DA 691	

SA CATEGORY I & II ILS SPECIAL AIRCREW & AIRCRAFT CERTIFICATION REQUIRED

HIRL all Rwy's
REIL Rwy's 13L and 31L
TDZ/CL all Rwy's except 13L, and 31L

SC-2, 15 MAY 2025 to 12 JUN 2025

SC-2, 15 MAY 2025 to 12 JUN 2025