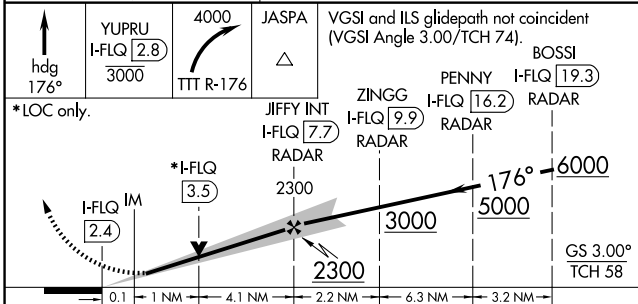
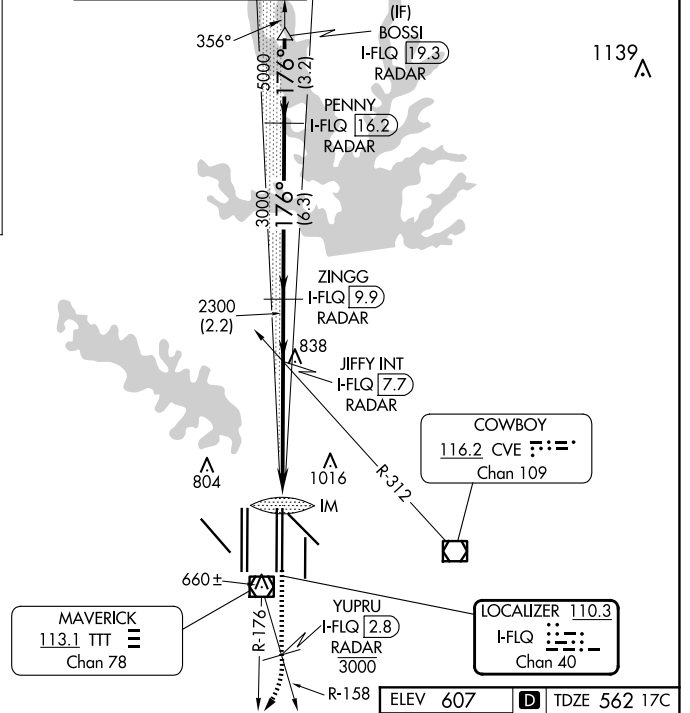
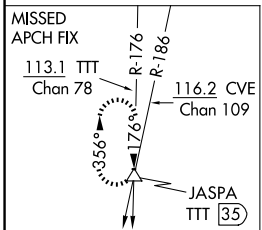
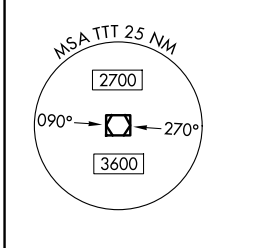
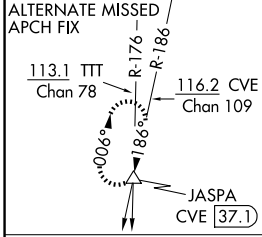


LOC/DME I-FLQ 110.3 Chan 40	APP CRS 176°	Rwy Idg 17C 17R	13400 13400
		TDZE 562	567
		Apt Elev 607	607

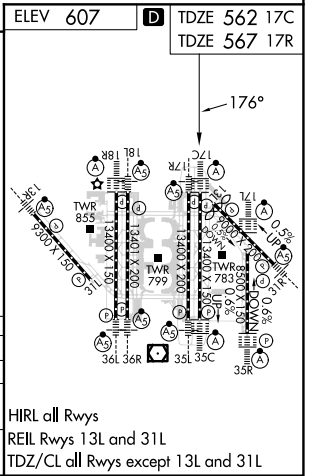
ILS or LOC RWY 17C

DALLAS-FORT WORTH INTL (DFW)

DME and RADAR required.		Rwy 17C ALSF-2	Rwy 17R MALSR	MISSED APPROACH: Climb on heading 176° to cross YUPRU/2.8 DME/RADAR at or below 3000, then climbing right turn to 4000 on TTT VOR/DME R-176 to JASPA/TTT 35 DME and hold.		
Simultaneous approach authorized with Rwy 17L, 18L/R. Inop table does not apply to sidestep 17R Cats A and B.		(A)	(A)			
D-ATIS ARR 123.775 DEP 135.925	LONE STAR APP CON 127.075	DFW TOWER 126.55 127.5 EAST 124.15 134.9 WEST		GND CON 121.65 121.8 EAST 121.85 WEST	CLNC DEL 128.25	CPDLC



CATEGORY	A	B	C	D
S-ILS 17C	762/18		200 (200-1/2)	
S-LOC 17C	1000/24	438 (400-1/2)	1000/40	438 (400-3/4)
SIDESTEP 17R	1140/55 573 (600-1)		1140-1 1/2 573 (600-1 1/2)	



SC-2, 15 MAY 2025 to 12 JUN 2025

SC-2, 15 MAY 2025 to 12 JUN 2025