

LOC/DME I-AJQ <b>111.75</b> Chan 54(Y)	APP CRS <b>356°</b>	Rwy Idg TDZE Apt Elev <b>8500</b> <b>575</b> <b>607</b>
--	------------------------	--

# ILS RWY 35R (CAT II & III)

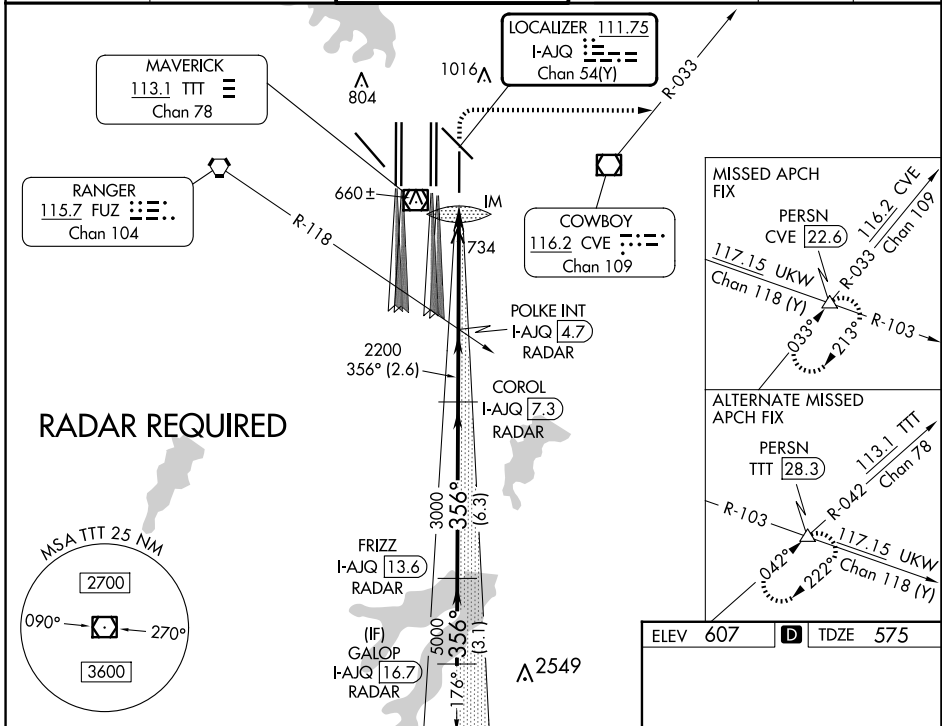
DALLAS-FORT WORTH INTL (DFW)

Simultaneous approach authorized with Rwy 36L/R and Rwy 35L/C.

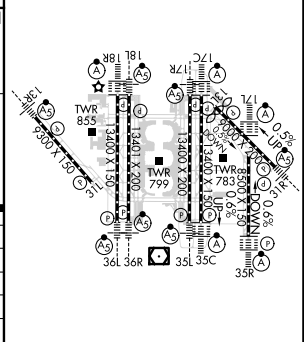
ALSF-2

MISSED APPROACH: Climb to 1040 then climbing right turn to 3000 on heading 090° and CVE VOR/DME R-033 to PERSN/CVE 22.6 DME and hold.

D-ATIS ARR <b>123.775</b> DEP <b>135.925</b>	LONE STAR APP CON <b>119.4</b>	DFW TOWER <b>126.55 127.5</b> EAST <b>124.15 134.9</b> WEST	GND CON <b>121.65 121.8</b> EAST <b>121.85</b> WEST	CLNC DEL <b>128.25</b>	CPDLC
--	-----------------------------------	---	---	---------------------------	-------



GALOP I-AJQ 16.7 RADAR	FRIZZ I-AJQ 13.6 RADAR	COROL I-AJQ 7.3 RADAR	POLKE INT I-AJQ 4.7 RADAR	1040	3000	CVE R-033	PERSN
5000	5000	3000	2200	IM	hdg 090°		
GS 3.00° TCH 58	5000	3000	2200	671			
VGS1 and ILS glidepath not coincident (VGS1 Angle 3.00/TCH 73).							
3.1 NM		6.3 NM		2.6 NM		4.9 NM	
A		B		C		D	
S-ILS 35R	CAT II RA 94/12			100 DA 675			
S-ILS 35R	CAT IIIa			RVR 07			
S-ILS 35R	CAT IIIb			RVR 06			
S-ILS 35R	CAT IIIc			NA			



## CATEGORY II & III ILS - SPECIAL AIRCREW & AIRCRAFT CERTIFICATION REQUIRED

SC-2, 15 MAY 2025 to 12 JUN 2025

SC-2, 15 MAY 2025 to 12 JUN 2025