

LOC/DME I-VYV 111.9 Chan 56	APP CRS 176°	Rwy Idg TDZE Apt Elev	13400 607 607
---	------------------------	-----------------------------	--

ILS RWY 18R (CAT II & III)

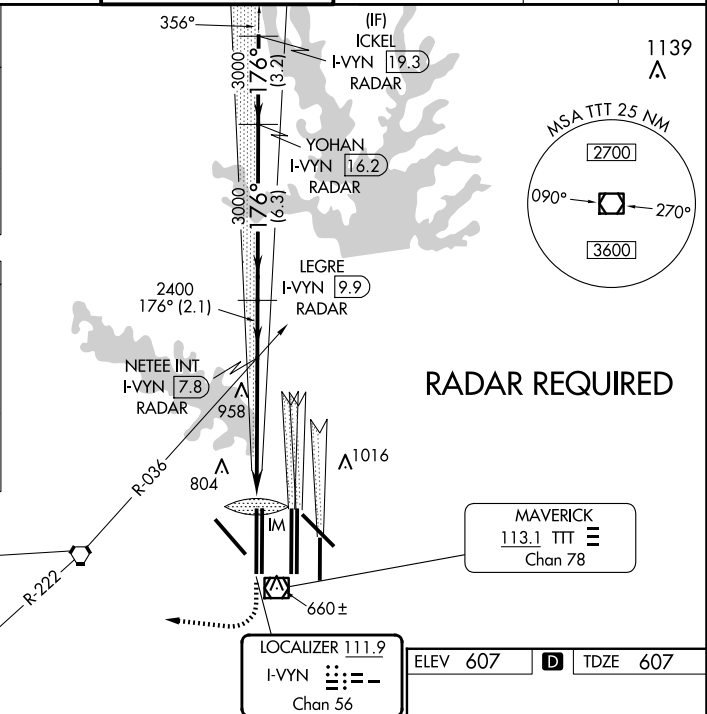
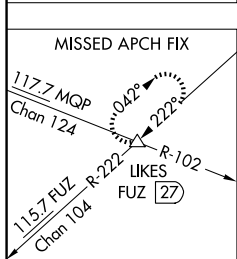
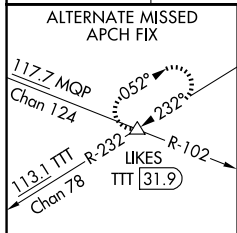
DALLAS-FORT WORTH INTL (DFW)

⚠ DME or RADAR required. Simultaneous approach authorized with Rwy 17 L/C/R.

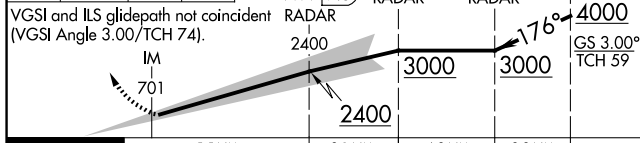
ALSIF-2

MISSED APPROACH: Climb to 1100 then climbing right turn to 3000 on heading 250° and FUZ VORTAC R-222 to LIKES INT/FUZ VORTAC 27 DME and hold.

D-ATIS ARR 123.775 DEP 135.925	LONE STAR APP CON 118.425	DFW TOWER 126.55 127.5 EAST 124.15 134.9 WEST	GND CON 121.65 121.8 EAST 121.85 WEST	CLNC DEL 128.25	CPDLC
--	-------------------------------------	---	---	---------------------------	-------



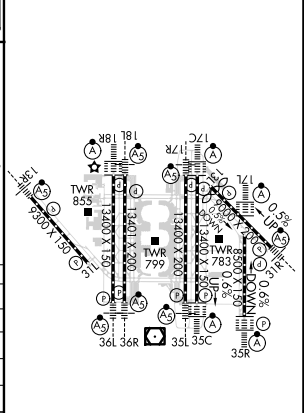
1100	3000	FUZ R-222	LIKES	ICKEL I-VYV 19.3
↑	hdg 250°	△		
		NETEE INT I-VYV 7.8	LEGRE I-VYV 9.9	YOHAN I-VYV 16.2
		RADAR	RADAR	RADAR



CATEGORY	A	B	C	D
S-ILS 18R		CAT II RA 106/12 100 DA 707		
S-ILS 18R		CAT IIIa RVR 07		
S-ILS 18R		CAT IIIb RVR 06		
S-ILS 18R		CAT IIIc NA		

CATEGORY II & III ILS - SPECIAL AIRCREW & AIRCRAFT CERTIFICATION REQUIRED

ELEV 607	D	TDZE 607
----------	----------	----------



HILL all Rwys
REIL Rwys 13L and 31L
TDZ/CL all Rwys except 13L and 31L

SC-2, 15 MAY 2025 to 12 JUN 2025

SC-2, 15 MAY 2025 to 12 JUN 2025