

|  |                        |  |
|--|------------------------|--|
| LOC/DME I-CIX<br><b>110.55</b><br>Chan <b>42</b> (Y) | APP CRS<br><b>176°</b> | Rwy Idg <b>13401</b><br>TDZE <b>602</b><br>Apt Elev <b>606</b> |
|--|------------------------|--|

# ILS RWY 18L (CONVERGING)

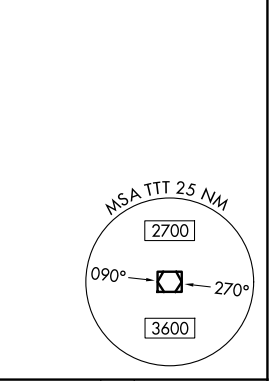
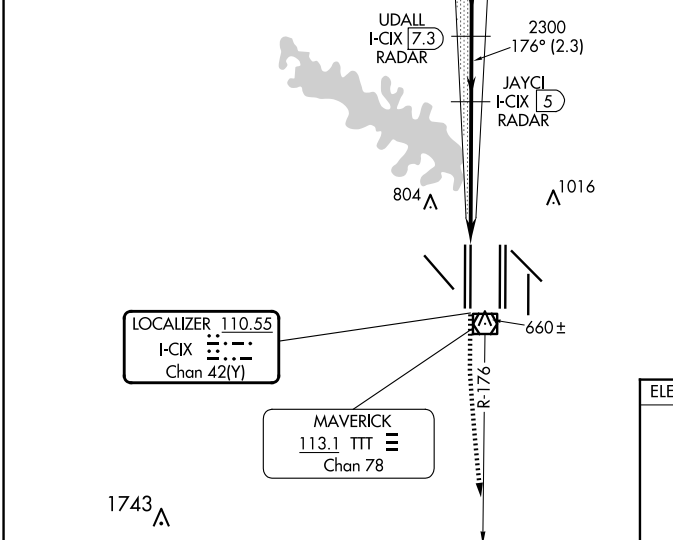
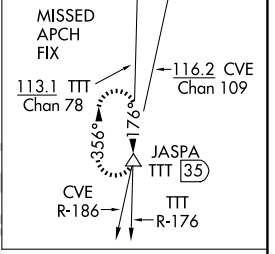
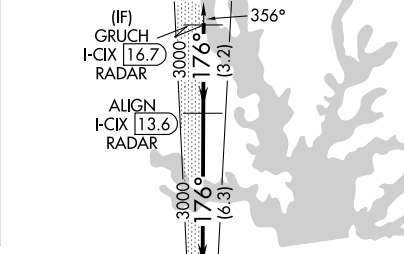
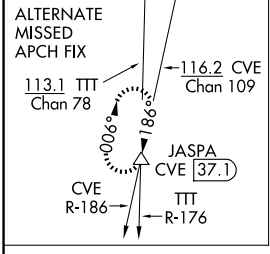
DALLAS-FORT WORTH INTL (DFW)

DME and RADAR required.

Simultaneous approach authorized with CONVERGING ILS RWY 13R.

MALSR MISSED APPROACH: Climb to 3000, then climb to 4000 on heading 170° and TTT VOR/DME R-176 to JASPA/TTT 35 DME and hold.

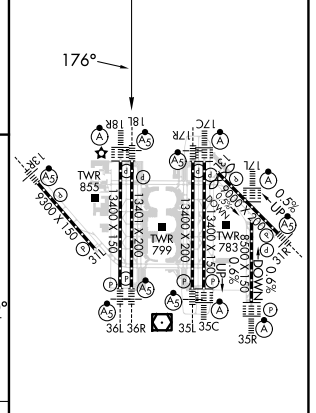
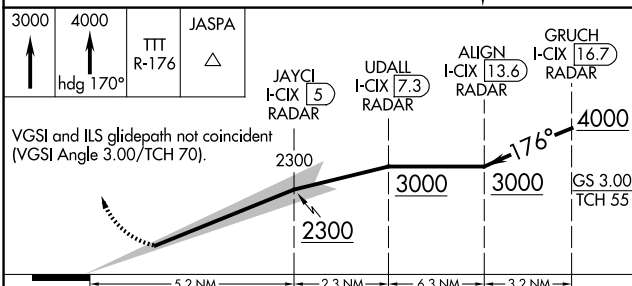
|  |                                     |   |   |                           |       |
|--|-------------------------------------|---|---|---------------------------|-------|
| D-ATIS<br>ARR <b>123.775</b><br>DEP <b>135.925</b> | LONE STAR APP CON<br><b>118.425</b> | DFW TOWER<br><b>126.55 127.5</b> EAST<br><b>124.15 134.9</b> WEST | GND CON<br><b>121.65 121.8</b> EAST<br><b>121.85</b> WEST | CLNC DEL<br><b>128.25</b> | CPDLC |
|--|-------------------------------------|---|---|---------------------------|-------|



LOCALIZER **110.55**  
I-CIX  
Chan **42**(Y)

MAVERICK  
**113.1** TTT  
Chan **78**

ELEV **606** TDZE **602**



|           |        |   |               |   |
|-----------|--------|---|---------------|---|
| CATEGORY  | A      | B | C             | D |
| S-ILS 18L | 802/18 |   | 200 (200-1/2) |   |

HIRL all Rwys  
REIL Rwys 13L and 31L  
TDZ/CL all Rwys except 13L and 31L

SC-2, 15 MAY 2025 to 12 JUN 2025

SC-2, 15 MAY 2025 to 12 JUN 2025