

# GARLAND SIX DEPARTURE

SC-2, 15 MAY 2025 to 12 JUN 2025

**TOP ALTITUDE:**  
**RWYS 13L/R, 17L/C/R, 18L/R,**  
**35L/C/R, 36L/R: 10000**  
**RWYS 31L/R: 5000**

LONE STAR DEP CON  
 118.55 290.35  
 D-ATIS DEP  
 135.925  
 CLNC DEL  
 128.25  
 CPDLC  
 GND CON  
 121.65 121.8 (EAST)  
 121.85 (WEST)  
 DFW TOWER  
 126.55 127.5 (EAST)  
 124.15 134.9 (WEST)

NOTE: SOLDO Transition: ATC assigned.  
 NOTE: For all aircraft requesting FL230 and below.  
 NOTE: For all aircraft requesting FL240 and above expect DALLAS DEPARTURE.  
 NOTE: Jets maintain 240K until leaving 5000.

**TAKEOFF MINIMUMS**  
 Rwys 13L/R, 17L/C/R, 18L/R, 31L/R, 35L/C, 36L/R: Standard.  
 Rwy 35R: Standard with minimum climb of 245'/NM to 1200.

RADAR and DME required.

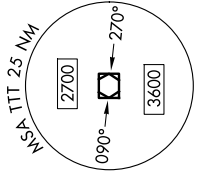
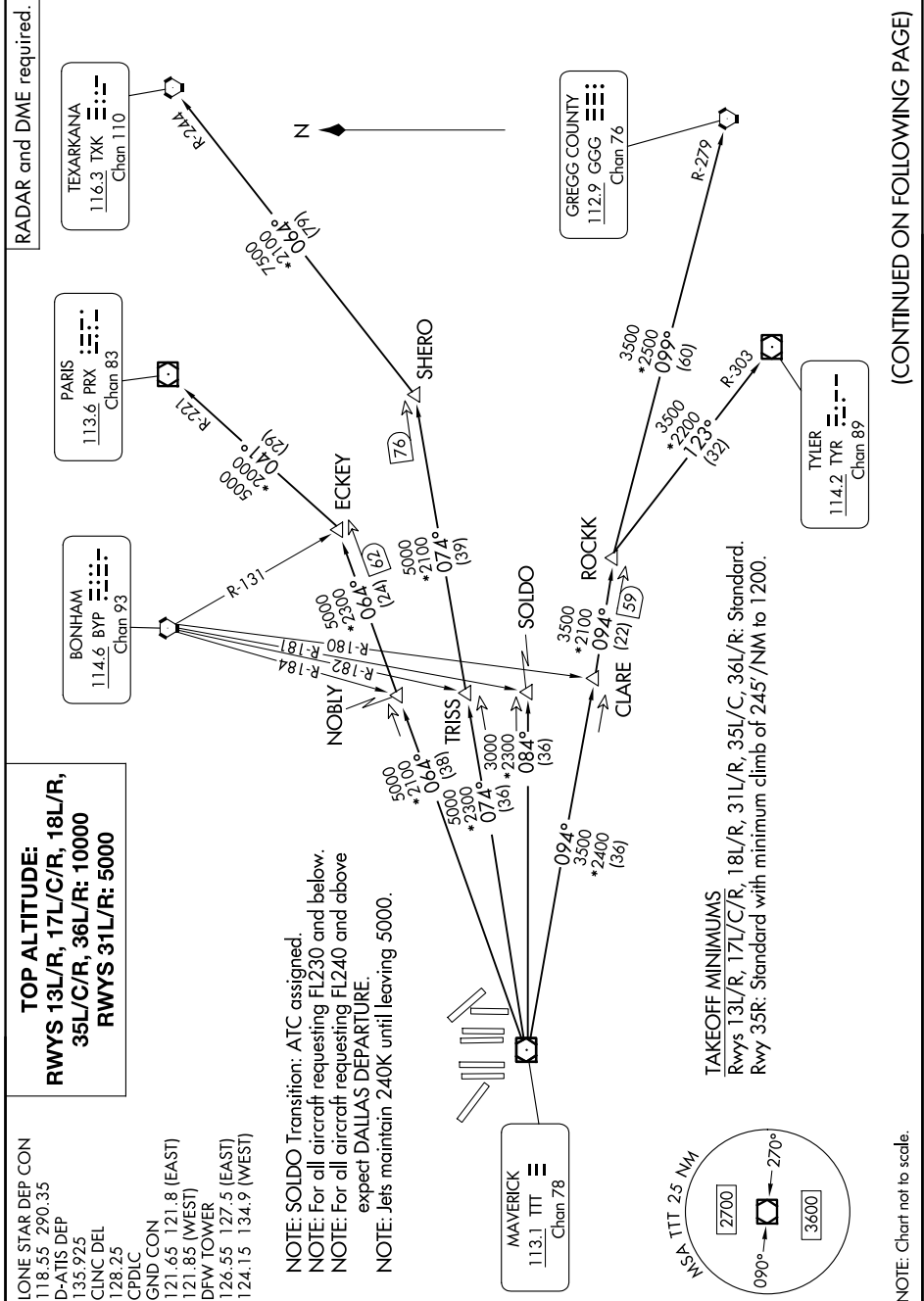
TEXARKANA  
 116.3 TKX  
 Chan 110

PARIS  
 113.6 PRX  
 Chan 83

BONHAM  
 114.6 BYP  
 Chan 93

GREGG COUNTY  
 112.9 GGG  
 Chan 76

TYLER  
 114.2 TYR  
 Chan 89



NOTE: Chart not to scale.

(CONTINUED ON FOLLOWING PAGE)

# GARLAND SIX DEPARTURE

SC-2, 15 MAY 2025 to 12 JUN 2025