

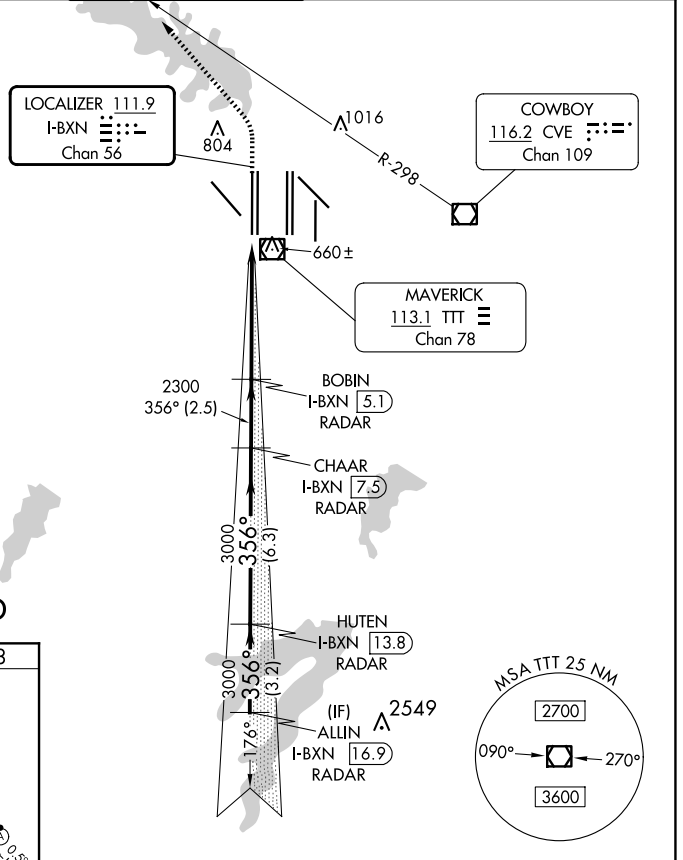
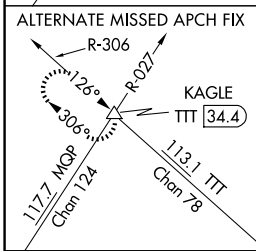
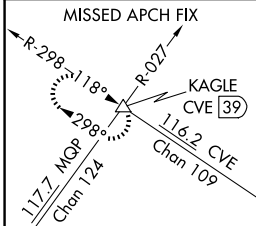
LOC/DME I-BXN 111.9 Chan 56	APP CRS 356°	Rwy Idg TDZE Apt Elev 13400 588 607
---	------------------------	---

CONVERGING ILS RWY 36L

DALLAS-FORT WORTH INTL (DFW)

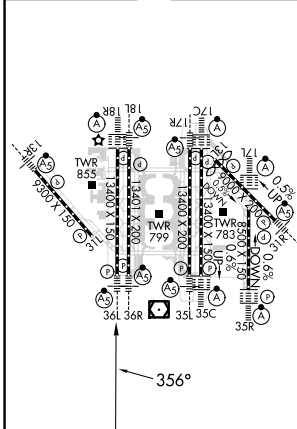
▽ DME or RADAR required. Simultaneous approach authorized with CONVERGING ILS RWY 31R.	MALSR 	MISSED APPROACH: Climb to 1100 then climbing left turn to 3000 on heading 315° and CVE VOR/DME R-298 to KAGLE INT/CVE VOR/DME 39 DME and hold.
---	------------------	--

D-ATIS ARR 123.775 DEP 135.925	LONE STAR APP CON 118.425	DFW TOWER 126.55 127.5 EAST 124.15 134.9 WEST	GND CON 121.65 121.8 EAST 121.85 WEST	CLNC DEL 128.25	CPDLC
--	-------------------------------------	--	---	---------------------------	-------



RADAR REQUIRED

ELEV 607	D TDZE 588
-----------------	--------------------------



1100	3000	CVE R-298	KAGLE	BOBIN I-BXN 5.1 RADAR	CHAAR I-BXN 7.5 RADAR	HUTEN I-BXN 13.8 RADAR	ALLIN I-BXN 16.9 RADAR
VGSi and ILS glidepath not coincident (VGSi Angle 3.00/TCH 72).				2300	3000	3000	4000
				5.2 NM	2.5 NM	6.3 NM	3.2 NM
CATEGORY				A	B	C	D
S-ILS 36L				788/18 200 (200-1/2)			

CONVERGING ILS RWY 36L

SC-2, 15 MAY 2025 to 12 JUN 2025

SC-2, 15 MAY 2025 to 12 JUN 2025