

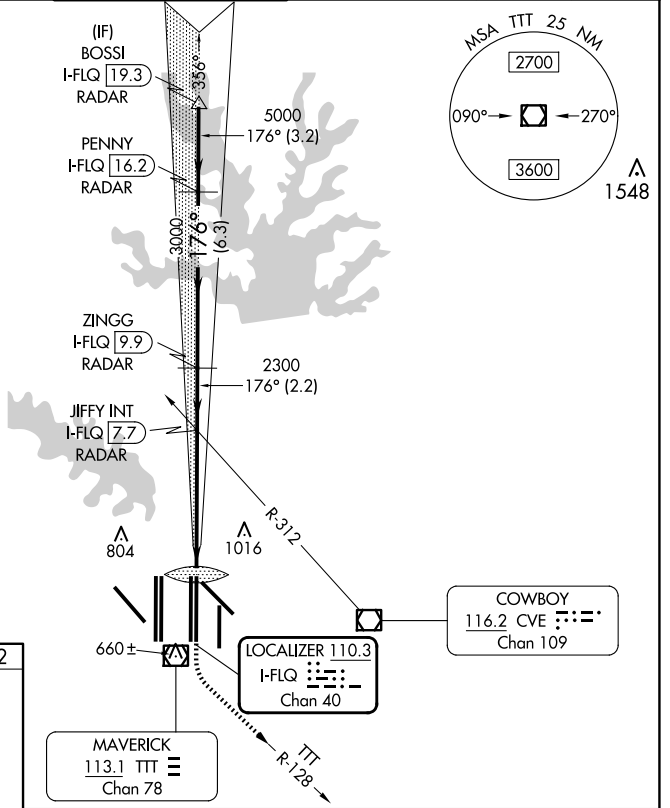
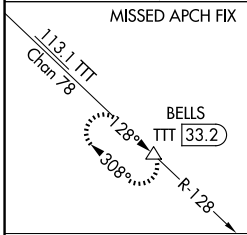
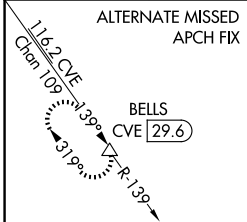
LOC/DME I-FLQ 110.3 Chan 40	APP CRS 176°	Rwy ldg 13400 TDZE 562 Apt Elev 607
---	------------------------	--

CONVERGING ILS RWY 17C

DALLAS-FORT WORTH INTL (DFW)

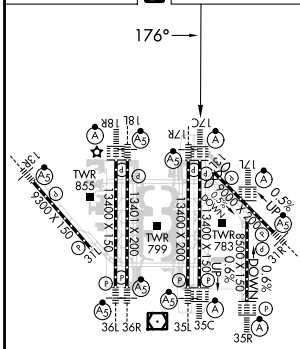
▼ DME or RADAR required. Simultaneous approach authorized with Converging ILS Rwy 13R.		ALSF-2 	MISSED APPROACH: Climb to 3000 then climbing left turn to 3000 on TTT VOR/DME R-128 to BELLS/TTT 33.2 DME and hold.	
--	--	------------	---	--

D-ATIS ARR 123.775 DEP 135.925	LONE STAR APP CON 127.075	DFW TOWER 126.55 127.5 EAST 124.15 134.9 WEST	GND CON 121.65 121.8 EAST 121.85 WEST	CLNC DEL 128.25	CPDLC
--	-------------------------------------	---	---	---------------------------	-------



RADAR REQUIRED

ELEV 607	D	TDZE 562
-----------------	----------	-----------------



HIRL all Rwys
REIL Rws 13L and 31L
TDZ/CL all Rws except 13L and 31L

1300	3000	BELLS	VGSJ and ILS glidepath not coincident (VGSJ Angle 3.00/TCH 74).	
↑	TTT R-128	△	JIFFY INT I-FLQ 7.7 RADAR	ZINGG I-FLQ 9.9 RADAR
			PENNY I-FLQ 16.2 RADAR	BOSSI I-FLQ 19.3 RADAR
			IM 654	2300
			2300	3000
			5000	6000
			GS 3.00°	TCH 58
			0.1	5.2 NM
			2.2 NM	6.3 NM
			3.2 NM	
CATEGORY	A	B	C	D
S-ILS 17C	762/18		200 (200-1/2)	