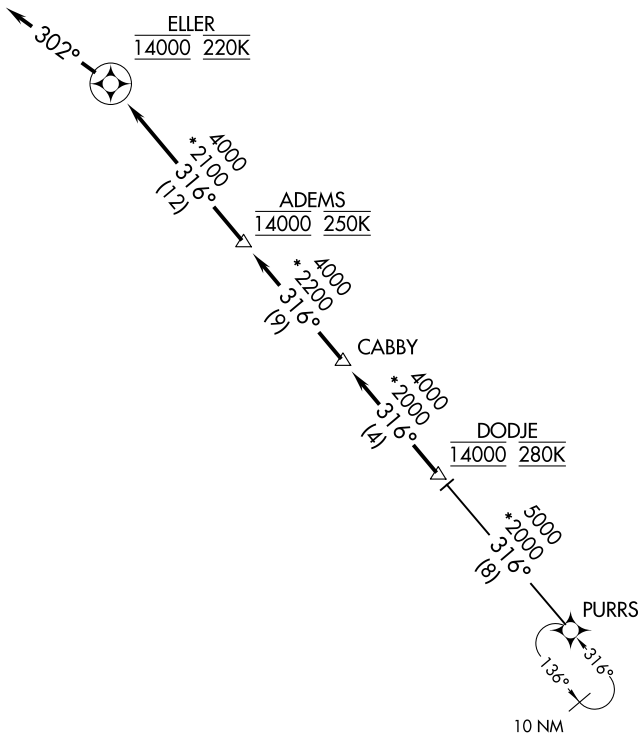


# CABBY TWO ARRIVAL (RNAV)

LONE STAR APP CON  
125.025 263.025  
D-ATIS ARR  
123.775

- NOTE: RADAR required.
- NOTE: RNAV 1.
- NOTE: DME/DME/IRU or GPS required.
- NOTE: Turbojet aircraft only.
- NOTE: ATC assigned only.



NOTE: Chart not to scale.

## ARRIVAL ROUTE DESCRIPTION

### PURRS TRANSITION (PURRS.CABBY2)

From DODJE on track 316° to CABBY, then on track 316° to cross ADEMS at 14000 and at 250K, then on track 316° to cross ELLER at 14000 and at 220K, then on track 302°. Expect RADAR vectors to final approach course.