

BRDJE FIVE ARRIVAL (RNAV) Transition Routes

LONE STAR APP CON  
125.025 263.025  
D-ATIS ARR  
123.775

RNAV 1 - DME/DME/IRU or GPS.

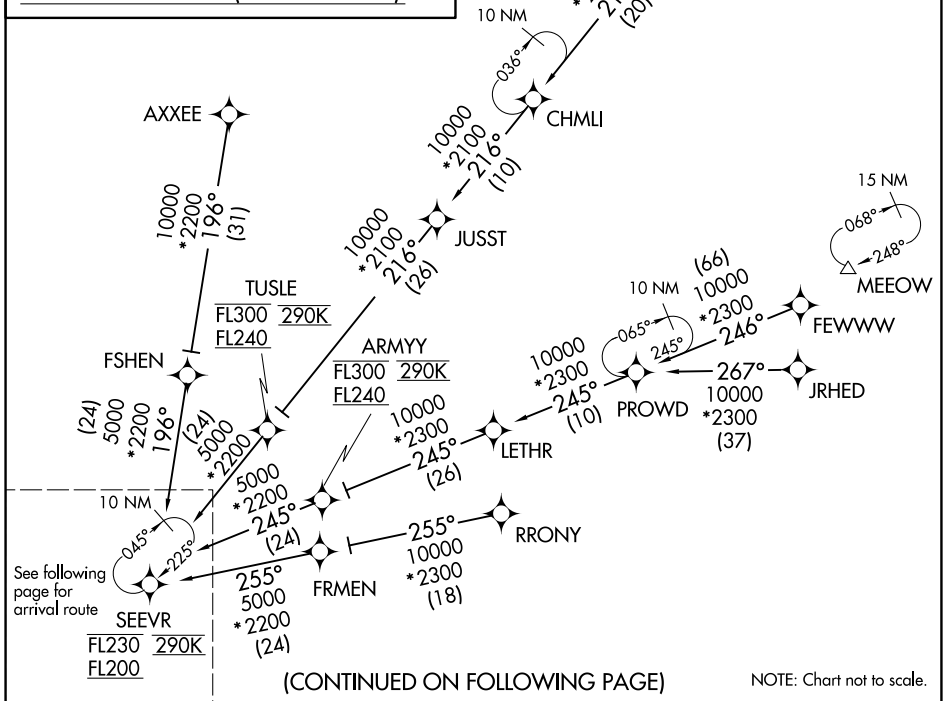
RADAR required.

NOTE: Jet aircraft only.  
NOTE: For use when DFW is operating in a north flow.  
When DFW is in south flow, expect and file the  
SEEVR (RNAV) STAR.  
NOTE: JRHED Transition: Do not file - to be assigned by ATC.  
NOTE: PROWD Transition: Do not file - to be assigned by ATC.  
NOTE: CHMLI Transition: Do not file - to be assigned by ATC.  
NOTE: AXXEE and RRONY Transitions for aircraft filing  
FL230 and below.

- AXXEE TRANSITION (AXXEE.BRDJE5)
- CHMLI TRANSITION (CHMLI.BRDJE5)
- FEWWW TRANSITION (FEWWW.BRDJE5)
- HITUG TRANSITION (HITUG.BRDJE5)
- JRHED TRANSITION (JRHED.BRDJE5)
- PROWD TRANSITION (PROWD.BRDJE5)
- RRNET TRANSITION (RRNET.BRDJE5)
- RRONY TRANSITION (RRONY.BRDJE5)

SC-2, 15 MAY 2025 to 12 JUN 2025

SC-2, 15 MAY 2025 to 12 JUN 2025



(CONTINUED ON FOLLOWING PAGE)

NOTE: Chart not to scale.

BRDJE FIVE ARRIVAL (RNAV) Transition Routes