

BOTCH ONE DEPARTURE (RNAV) Transition Routes

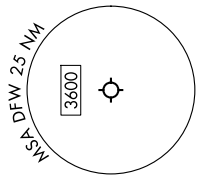
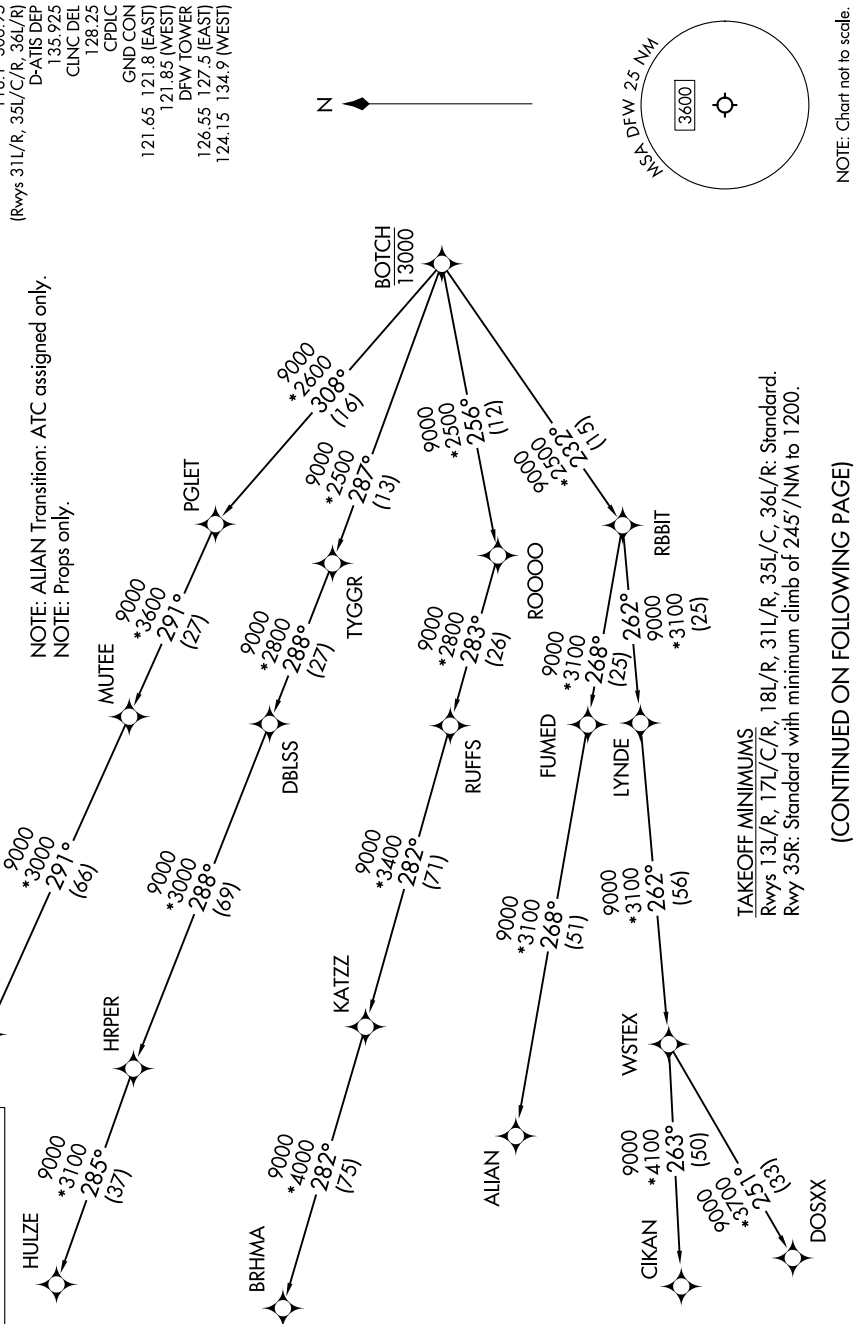
SC-2, 15 MAY 2025 to 12 JUN 2025

LONE STAR DEP CON
135.975 379.9
(Rwys 13L/R, 17L/C/R, 18L/R)
118.1 306.95
(Rwys 31L/R, 35L/C/R, 36L/R)
D-ATIS DEP
135.925
CUNC DEL
128.25
GND CON
CPDIC
121.65 121.8 (EAST)
121.85 (WEST)
DFW TOWER
126.55 127.5 (EAST)
124.15 134.9 (WEST)

RNAV 1 - DME/DME/IRU or GPS required.
RADAR required for non-GPS equipped aircraft.

NOTE: ALIAN Transition: ATC assigned only.
NOTE: Props only.

**TOP ALTITUDE:
ASSIGNED BY ATC**



NOTE: Chart not to scale.

TAKEOFF MINIMUMS
Rwys 13L/R, 17L/C/R, 18L/R, 31L/R, 35L/C, 36L/R: Standard.
Rwy 35R: Standard with minimum climb of 245'/NM to 1200.

(CONTINUED ON FOLLOWING PAGE)

SC-2, 15 MAY 2025 to 12 JUN 2025

BOTCH ONE DEPARTURE (RNAV) Transition Routes