

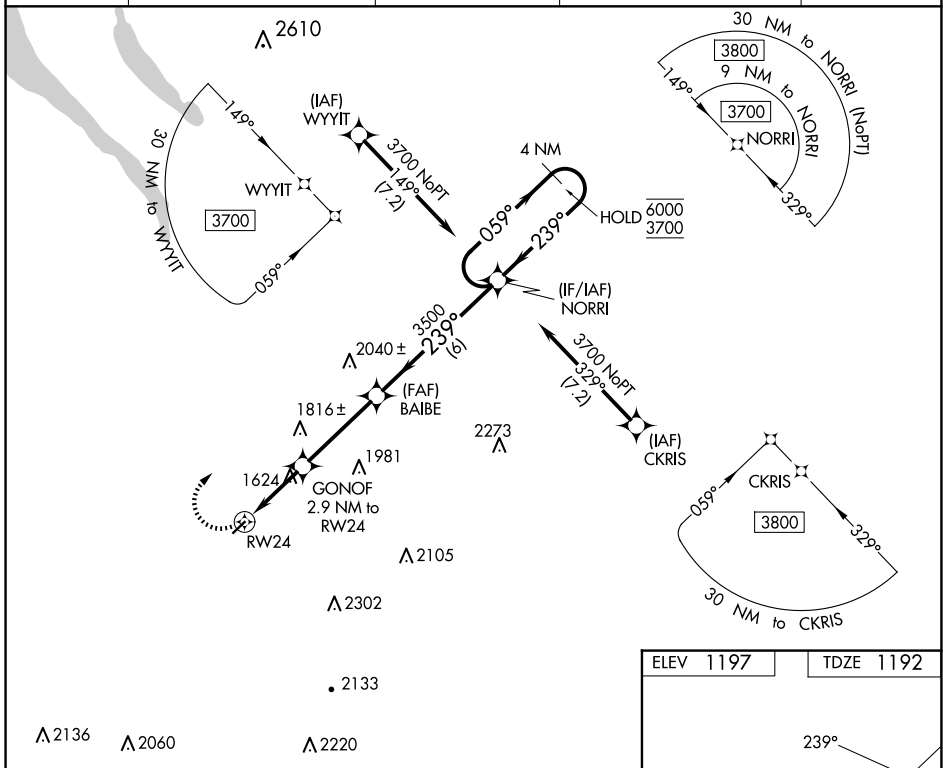
APP CRS	Rwy Idg	3401
239°	TDZE	1192
	Apt Elev	1197

RNAV (GPS) RWY 24

CORTLAND COUNTY/CHASE FLD (NØ3)

RNP APCH.		MISSED APPROACH: Climbing right turn to 3700 direct NORRI and hold.		
Rwy 24 helicopter visibility reduction below ¾SM NA.				

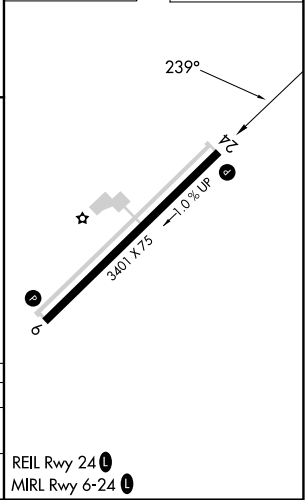
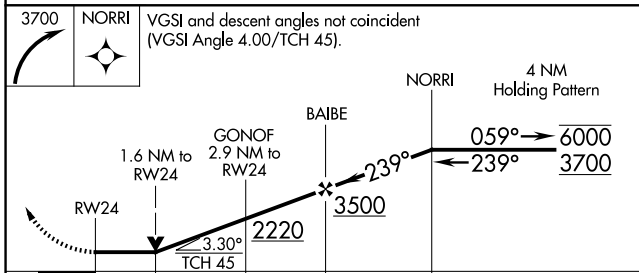
AWOS-3 132.225	BINGHAMTON APP CON ★ 118.6 257.625 (S-SE)	ELMIRA APP CON ★ 124.3 257.8 (W)	SYRACUSE APP CON 126.125 269.125 (N)	UNICOM 122.8 (CTAF)
--------------------------	---	--	--	-------------------------------



NE-2, 15 MAY 2025 to 12 JUN 2025

NE-2, 15 MAY 2025 to 12 JUN 2025

ELEV 1197	TDZE 1192
-----------	-----------



CATEGORY	A	B	C	D
LNVA MDA	1880-1	688 (700-1)	1880-2 688 (700-2)	NA
CIRCLING	1940-1 743 (800-1)	1980-1 783 (800-1)	2240-3 1043 (1100-3)	NA