

# RNAV (GPS) RWY 11 TRUCKEE-TAHOE (TRK)

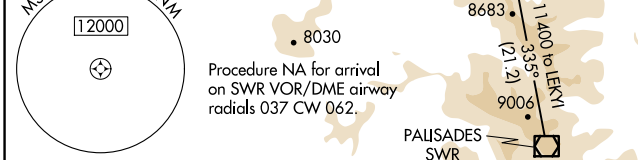
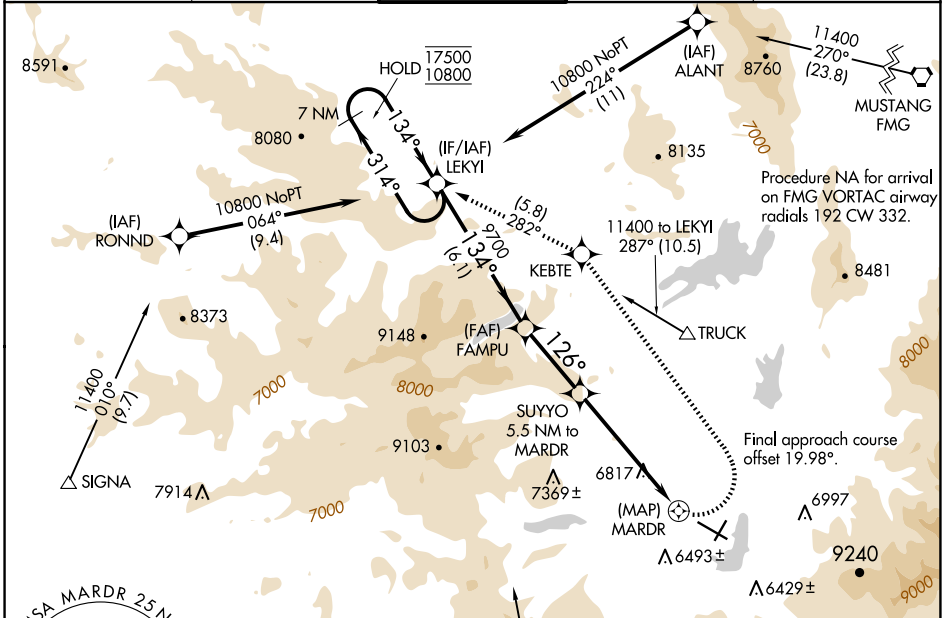
APP CRS <b>126°</b>	Rwy Idg TDZE Apt Elev	<b>7001</b> <b>5904</b> <b>5904</b>
------------------------	-----------------------------	---

RNP APCH.

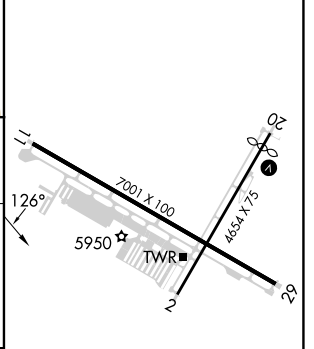
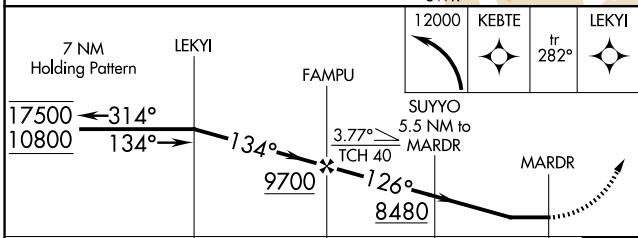
**▼** Circling NA for Cat C south of Rwy 29 and east of Rwy 2.  
**▲** Procedure NA at night. Rwy 11 helicopter visibility reduction below 1 SM NA. When local altimeter setting not received, procedure NA.  
**⊖** -18°C

MISSED APPROACH: (Do not exceed 220K until KEBTE) Climbing left turn to 12000 direct KEBTE and track 282° to LEKYI and hold, continue climb-in-hold 12000.

D-ATIS <b>118.0</b>	OAKLAND CENTER <b>127.95 316.1</b>	TRUCKEE TOWER * <b>120.575 (CTAF) 0</b>	GND CON <b>118.3</b>	UNICOM <b>122.95</b>
------------------------	---------------------------------------	--	-------------------------	-------------------------



ELEV 5904	TDZE 5904
-----------	-----------



CATEGORY	A	B	C	D
LNVA MDA	7720-1½ 1816 (1900-1½)	7720-1½ 1816 (1900-1½)	7720-3 1816 (1900-3)	NA
<b>C</b> CIRCLING	7720-1½ 1816 (1900-1½)	7720-1½ 1816 (1900-1½)	7720-3 1816 (1900-3)	NA

REIL Rwy 11 **0**  
MIRL Rwy 11-29 and 2-20 **0**

SW-2, 15 MAY 2025 to 12 JUN 2025

SW-2, 15 MAY 2025 to 12 JUN 2025