

APP CRS	Rwy Idg	3641
323°	TDZE	1286
	Apt Elev	1288

RNAV (GPS) RWY 32

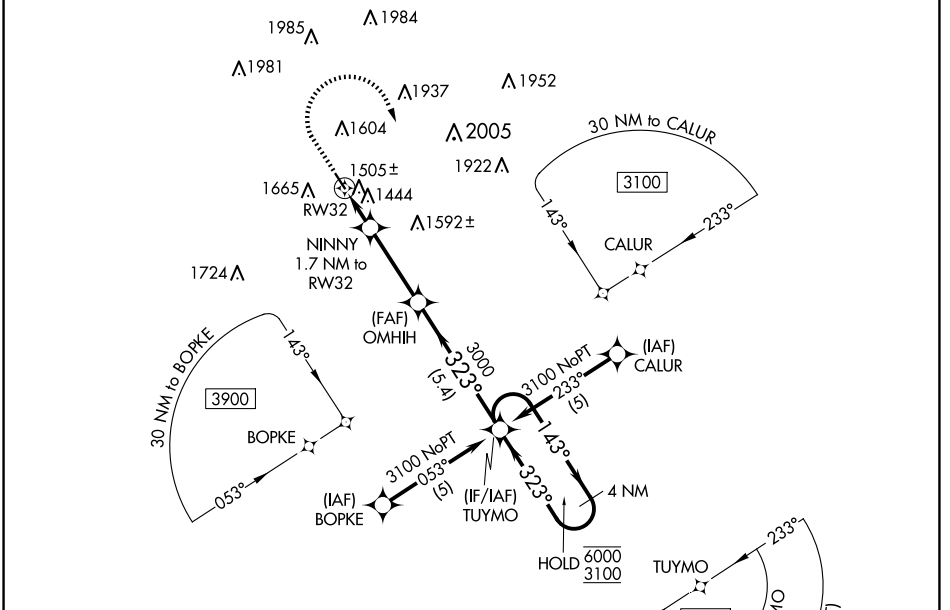
AUDUBON COUNTY (ADU)

RNP APCH - GPS.

▼ When local altimeter setting not received, procedure NA.
Rwy 32 helicopter visibility reduction below 3/4 SM NA.
Circling Rwy 14 NA at night.

MISSED APPROACH: Climb to 2500 then climbing right turn to 3100 direct TUYMO and hold.

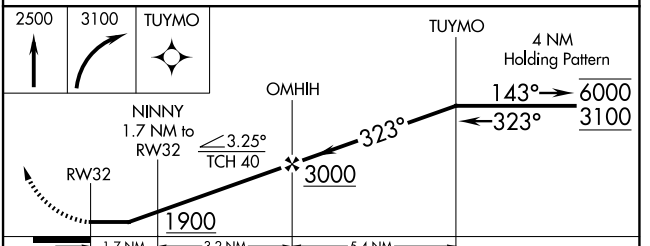
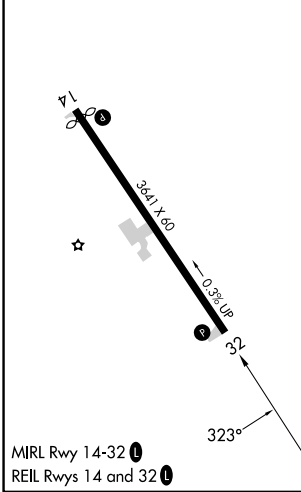
AWOS-3 118.075	MINNEAPOLIS CENTER 119.6 290.4	UNICOM 122.8 (CTAF) ①
--------------------------	--	---------------------------------



NC-3, 15 MAY 2025 to 12 JUN 2025

NC-3, 15 MAY 2025 to 12 JUN 2025

ELEV 1288	TDZE 1286
-----------	-----------



CATEGORY	A	B	C	D
LNAV MDA	1760-1	474 (500-1)	NA	
CIRCLING	1980-1	692 (700-1)	NA	