

APP CRS	Rwy Idg	3898
040°	TDZE	799
	Apt Elev	799

RNAV (GPS) RWY 4

CAMBRIDGE MUNI (CDI)

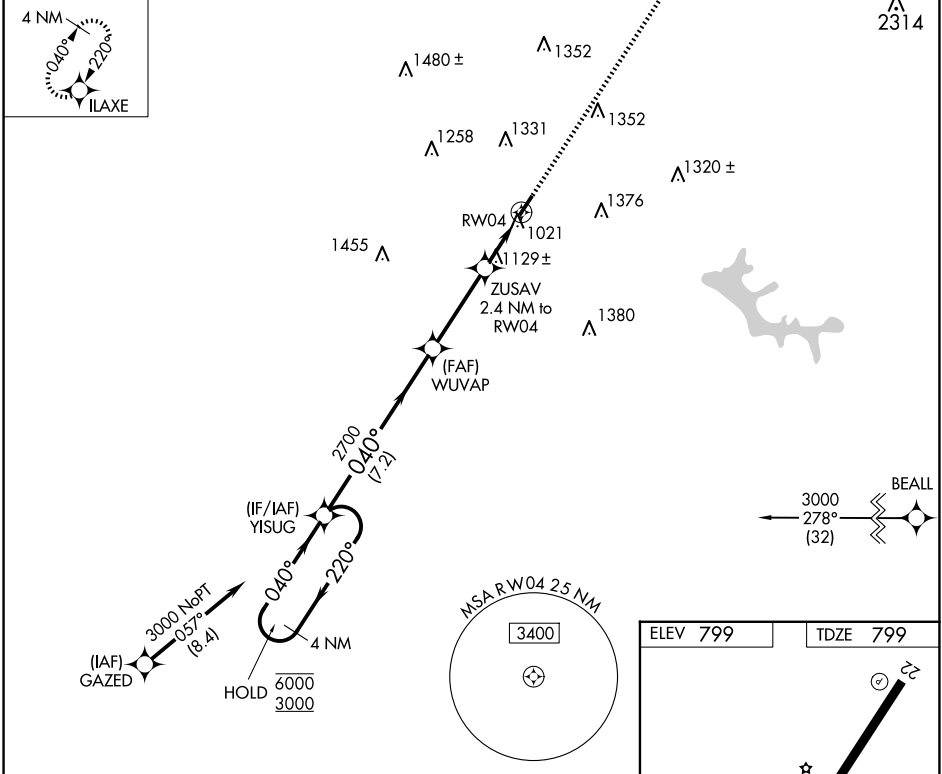
RNP APCH.

▼
▲ Rwy 4 helicopter visibility reduction below 1 SM NA. Straight-in and Circling Rwy 4 NA at night.

MISSED APPROACH:
Climb to 3000 direct
ILAXE and hold.

AWOS-3 118.525	(WEST) INDIANAPOLIS CENTER 124.45 323.275	(EAST) CLEVELAND CENTER 126.95 239.3	UNICOM 123.075 (CTAF) 0
--------------------------	---	--	-----------------------------------

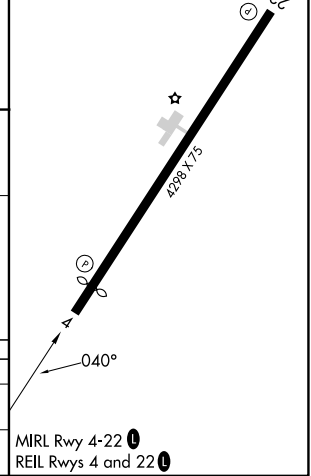
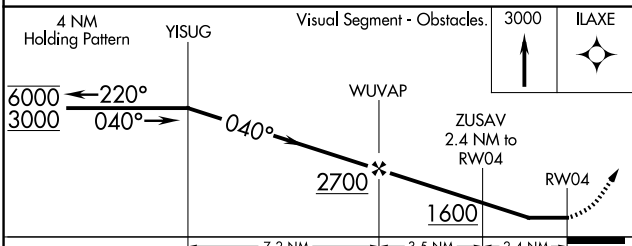
MISSED APCH FIX



EC-2, 15 MAY 2025 to 12 JUN 2025

EC-2, 15 MAY 2025 to 12 JUN 2025

ELEV 799	TDZE 799
----------	----------



CATEGORY	A	B	C	D
LNAV MDA	1380-1	581 (600-1)	1380-1¼ 581 (600-1¼)	NA
C CIRCLING	1460-1 661 (700-1)	1520-1 721 (800-1)	1800-3 1001 (1100-3)	NA