

WAAS CH <b>86237</b> <b>W21A</b>	APP CRS <b>213°</b>	Rwy Idg TDZE Apt Elev	<b>5000</b> <b>75</b> <b>75</b>
----------------------------------------	------------------------	-----------------------------	---------------------------------------

# RNAV (GPS) RWY 21

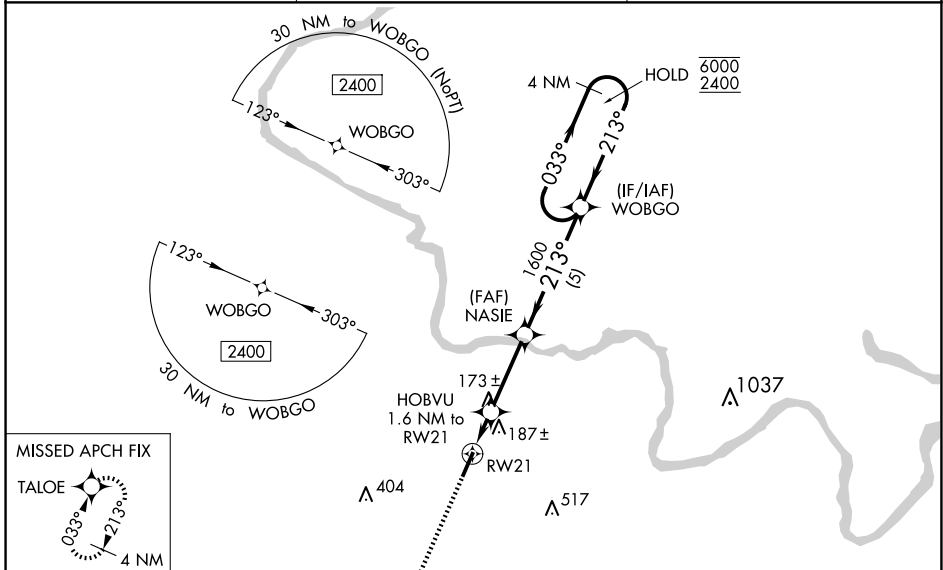
MARTIN COUNTY (MCZ)

RNP APCH - GPS.

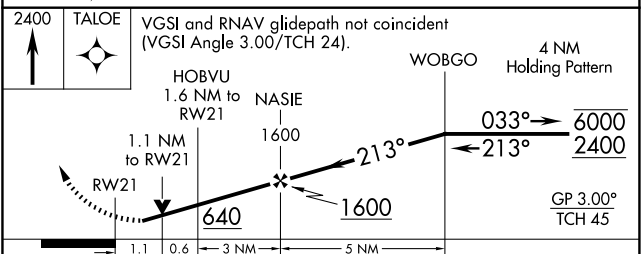
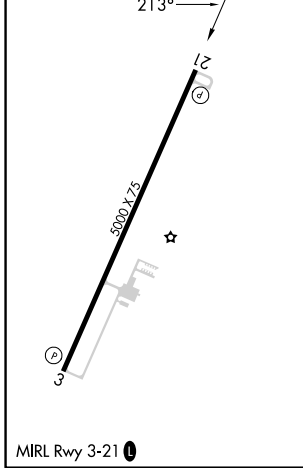
**⚠** Circling Rwy 3 NA at night. For uncompensated Baro-VNAV systems, LNAV/VNAV NA below -15°C or above 54°C.

**⚠** MISSED APPROACH: Climb to 2400 direct TALOE and hold, continue climb-in-hold to 2400.

AWOS-3P <b>118.65</b>	WASHINGTON CENTER <b>123.85 279.65</b>	UNICOM <b>122.8 (CTAF) 0</b>
--------------------------	-------------------------------------------	---------------------------------



ELEV 75	TDZE 75
---------	---------



CATEGORY	A	B	C	D
LPV DA		383-1	308 (400-1)	
LNAV/VNAV DA		343-1	268 (300-1)	
LNAV MDA		440-1	365 (400-1)	
<b>C</b> CIRCLING	500-1 425 (500-1)	540-1 465 (500-1)	680-1¾ 605 (700-1¾)	880-2½ 805 (900-2½)

SE-2, 15 MAY 2025 to 12 JUN 2025

SE-2, 15 MAY 2025 to 12 JUN 2025