

OCEANSIDE, CALIFORNIA

RNAV (GPS) RWY 21

WAAS CH 91083 W21A	APCH CRS 211°	Rwy ldg TDZE Arprt Elev	6005 78 78
---------------------------------	-------------------------	-------------------------------	---------------------------------------

- (USN) CAMP PENDLETON MCAS (MUNN FLD) (KNFG)

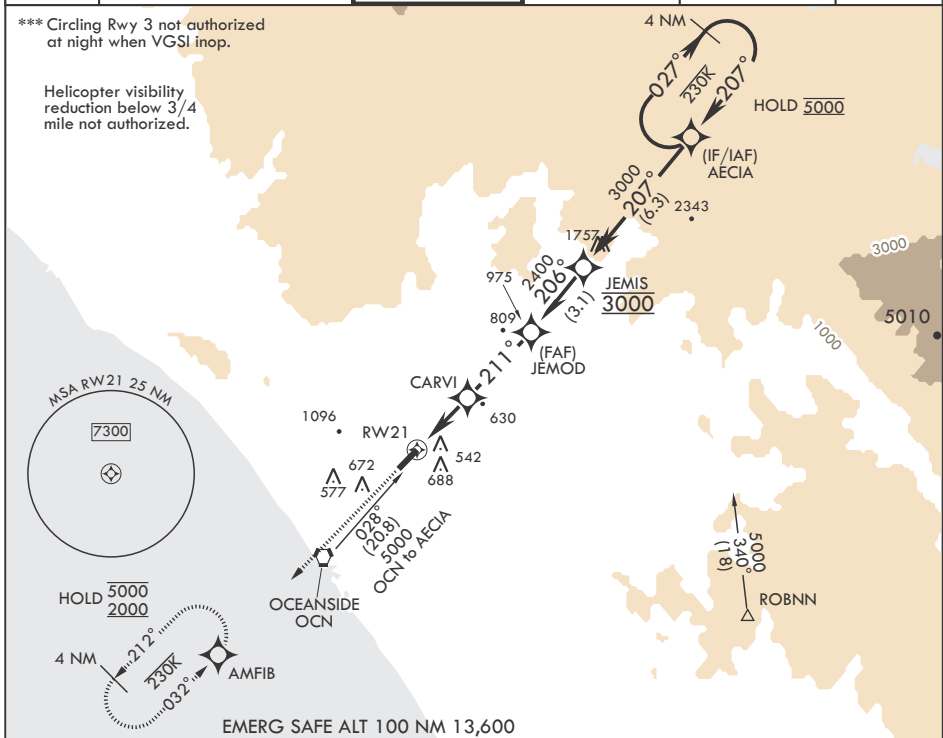
RNP APCH. DME/DME RNP-0.3 N/A	
* When ALS inop, increase vis to 1 mile. ** When ALS inop, increase CAT A vis to 1 mile, CAT B vis to 1 1/4 miles, CAT CD vis to 2 1/2 miles.	

MISSED APPROACH: Climb to 2000 direct AMFIB and hold.

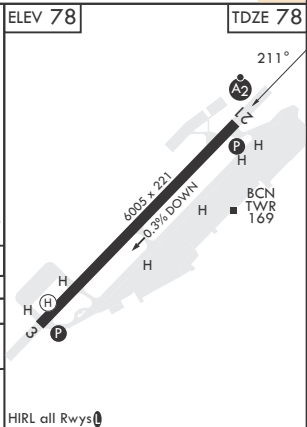
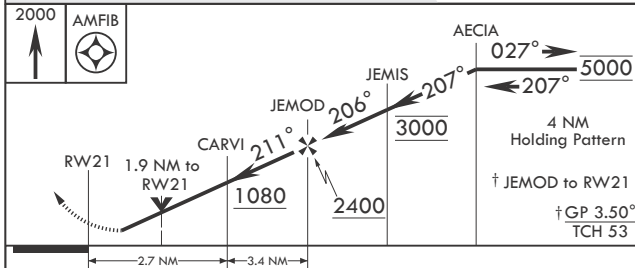
ATIS* 285.45	SOCAL APP CON/DEP CON 127.3 323.0	TOWER* 128.775 340.2	GND CON 134.675 360.2	CLNC DEL 134.675 271.6	ASR/PAR
------------------------	---	---------------------------------------	---------------------------------	----------------------------------	---------

*** Circling Rwy 3 not authorized at night when VGSI inop.

Helicopter visibility reduction below 3/4 mile not authorized.



EMERG SAFE ALT 100 NM 13,600



CATEGORY	A	B	C	D
LPV DA*	449-3/4	371	(400-3/4)	
LNAV MDA**	840-3/4 762 (800-3/4)	840-1 762 (800-1)	840-2 762	(800-2)
CIRCLING***	1000-1 1/4 922 (1000-1 1/4)	1260-1 1/2 1182 (1200-1 1/2)	1500-3	1422 (1500-3)

HIRL all Rwy's

OCEANSIDE, CALIFORNIA

33°18'N - 117°21'W CAMP PENDLETON MCAS (MUNN FLD) (KNFG)

Amdt 5 21APR22

RNAV (GPS) RWY 21

SW-3, 15 MAY 2025 to 12 JUN 2025

SW-3, 15 MAY 2025 to 12 JUN 2025