


COPTER TACAN RWY 21

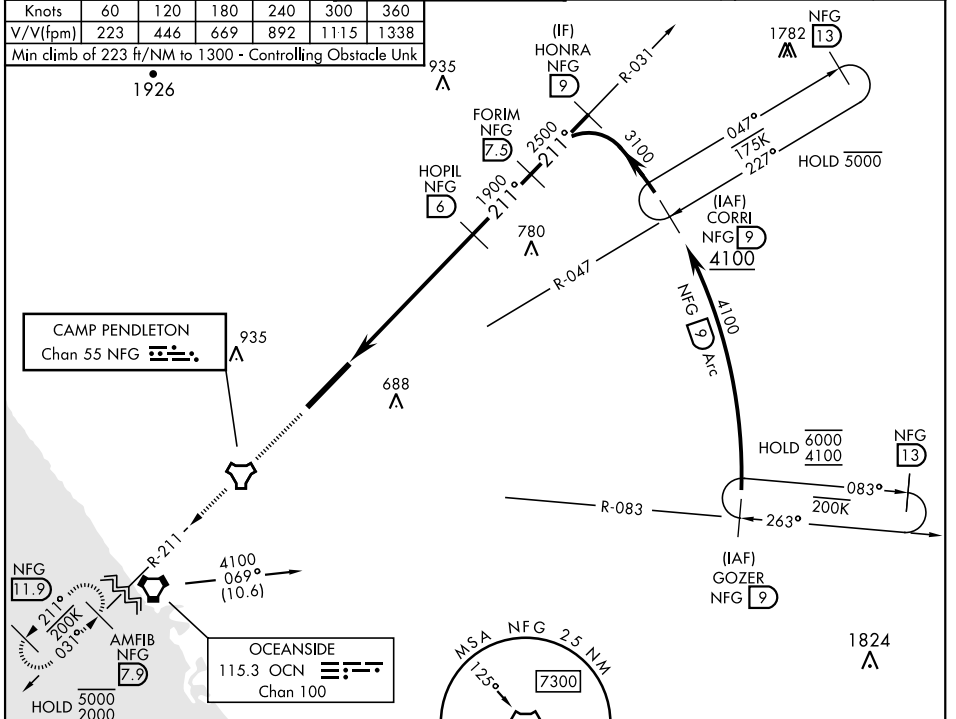
TACAN NFG Chan 55	APCH CRS 211°	Rwy ldg TDZE Arpt Elev 6005 78 78	[USN]	CAMP PENDLETON MCAS (MUNN FLD) (KNFG)
-----------------------------	-------------------------	---	-------	---------------------------------------

▼ * When ALS inop, increase vis to 1 mile.
 Visibility reduction by helicopters not authorized.

SALSF 

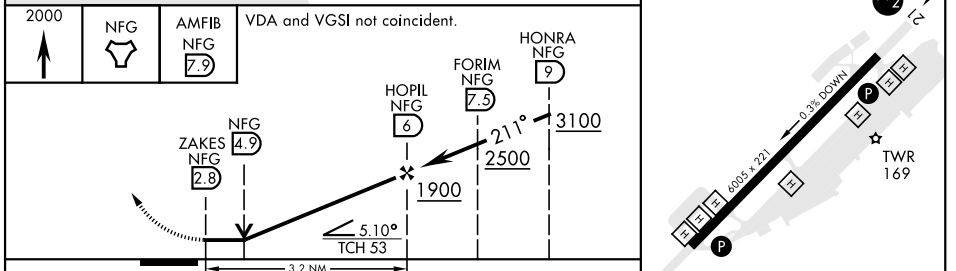
MISSED APPROACH: Climb to 2000 direct NFG TACAN then direct AMFIB and hold.

ATIS ★ 285.45	SOCAL APP CON 127.3 323.0	TOWER ★ 128.775 0 340.2	GND CON 134.675 360.2	CLNC DEL 134.675 271.6	ASR/ PAR
-------------------------	-------------------------------------	-----------------------------------	---------------------------------	----------------------------------	-------------



ELEV	78	TDZE	78
------	----	------	----

EMERG SAFE ALT 100 NM 13,600



CATEGORY	COPTER	
H-21*	940- $\frac{3}{4}$	862 (900- $\frac{3}{4}$)
CIRCLING	NOT AUTHORIZED	

HIRL Rwy 3-21

OCEANSIDE, CALIFORNIA 33°18'N-117°21'W CAMP PENDLETON MCAS (MUNN FLD) (KNFG)

COPTER TACAN RWY 21

SW-3, 15 MAY 2025 to 12 JUN 2025

SW-3, 15 MAY 2025 to 12 JUN 2025