

(LIFRR2.LIFRR) 24081

AL-5972 (FAA)

POMPANO BEACH AIRPARK (PMP)  
POMPANO BEACH, FLORIDA

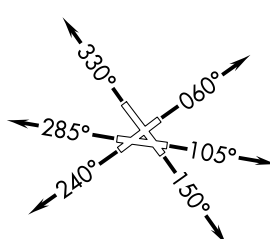
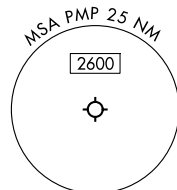
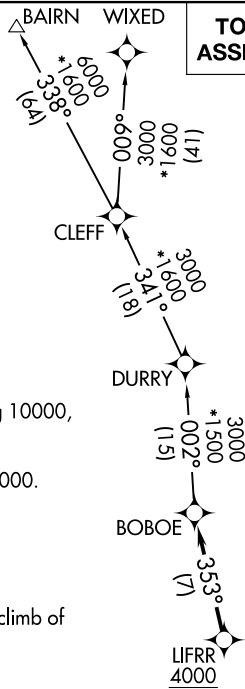
# LIFRR TWO DEPARTURE (RNAV)

RNAV 1 - DME/DME/IRU or GPS.

RADAR required for non-GPS equipped aircraft.

**TOP ALTITUDE:  
ASSIGNED BY ATC**

MIAMI DEP CON  
126.05 251.1  
ATIS  
120.55  
GND CON  
121.9  
POMPANO BEACH TOWER\*  
125.4 (CTAF)



NOTE: Accelerate to 250K until leaving 10000, if unable, advise ATC.  
NOTE: Jet aircraft only.  
NOTE: For aircraft filed at or below 12000.

### TAKEOFF MINIMUMS

Rwys 6, 24, 28, 33: Standard.  
Rwys 10, 15: Standard with minimum climb of 500'/NM to 520.

NOTE: Chart not to scale.

## DEPARTURE ROUTE DESCRIPTION

- TAKEOFF RUNWAY 6: Climb on heading 060° or as assigned by ATC, thence. . .
- TAKEOFF RUNWAY 10: Climb on heading 105° or as assigned by ATC, thence. . .
- TAKEOFF RUNWAY 15: Climb on heading 150° or as assigned by ATC, thence. . .
- TAKEOFF RUNWAY 24: Climb on heading 240° or as assigned by ATC, thence. . .
- TAKEOFF RUNWAY 28: Climb on heading 285° or as assigned by ATC, thence. . .
- TAKEOFF RUNWAY 33: Climb on heading 330° or as assigned by ATC, thence. . .

. . .for RADAR vector to cross LIFRR at or above 4000, then on track 353° to BOBOE, then on assigned transition, maintain ATC assigned altitude, expect clearance to filed altitude within 10 minutes after departure.

BAIRN TRANSITION (LIFRR2.BAIRN)  
WIXED TRANSITION (LIFRR2.WIXED)

**LIFRR TWO DEPARTURE (RNAV)**  
(LIFRR2.LIFRR) 21MAR24

POMPANO BEACH, FLORIDA  
POMPANO BEACH AIRPARK (PMP)

SE-3, 15 MAY 2025 to 12 JUN 2025

SE-3, 15 MAY 2025 to 12 JUN 2025