

WAAS CH 86436 W18A	APP CRS 183°	Rwy Idg TDZE 467 Apt Elev 472	5001 467 472
--	------------------------	---	---

RNAV (GPS) RWY 18

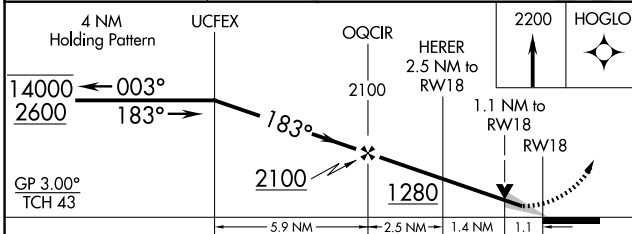
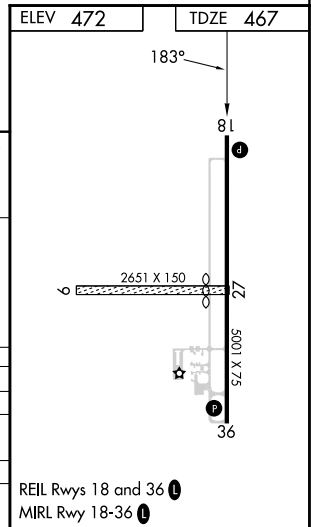
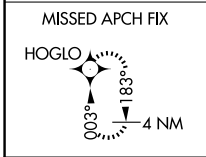
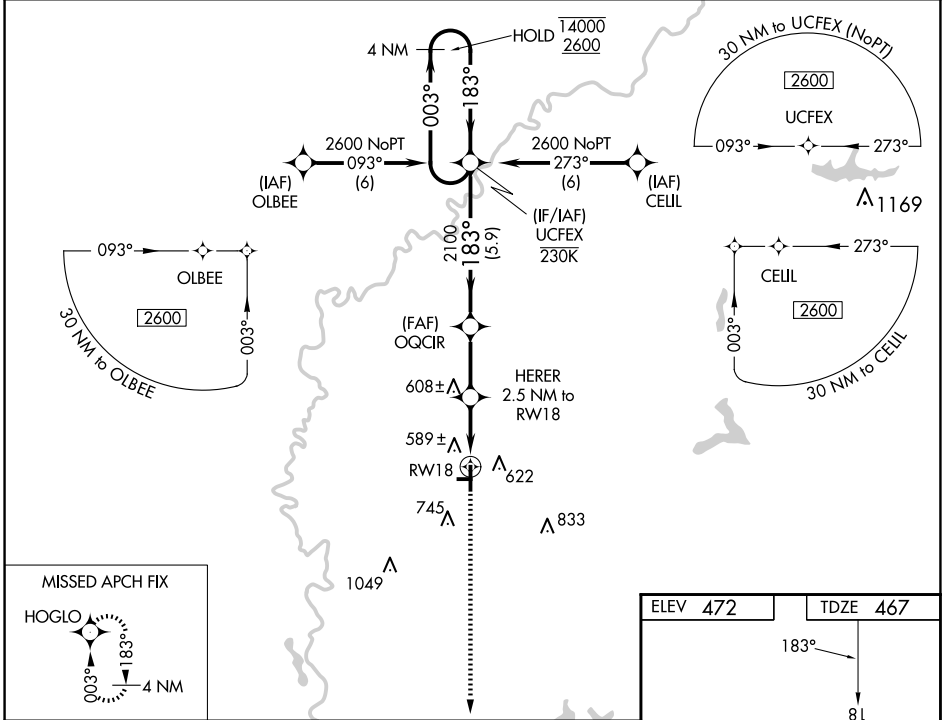
DAVISS COUNTY (DCY)

RNP APCH - GPS.

⚠ Circling NA to Rws 9 and 27. Circling to Rwy 36 NA at night. For uncompensated Baro-VNAV systems, LNAV/VNAV NA below -15°C or above 54°C.

MISSED APPROACH: Climb to 2200 direct HOGLO and hold.

AWOS-3PT 119.075	EVANSVILLE APP CON ★ 125.6 343.7	UNICOM 122.8 (CTAF) 0
----------------------------	--	---------------------------------



CATEGORY	A	B	C	D
LPV DA		778-1	311 (400-1)	
LNAV/VNAV DA		750-1	283 (300-1)	
LNAV MDA		840-1	373 (400-1)	
CIRCLING	1020-1 548 (600-1)	1060-1 588 (600-1)	1060-1½ 588 (600-1½)	1300-2¾ 828 (900-2¾)

EC-2, 15 MAY 2025 to 12 JUN 2025

EC-2, 15 MAY 2025 to 12 JUN 2025