

APP CRS **091°**
 Rwy Idg **4000**
 TDZE **434**
 Apt Elev **434**

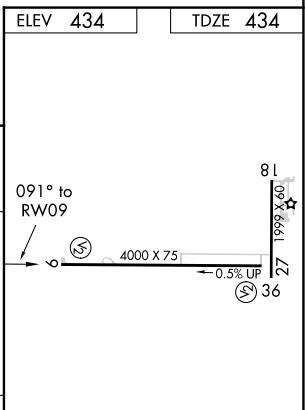
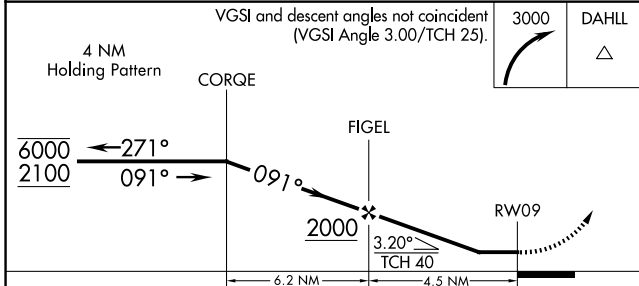
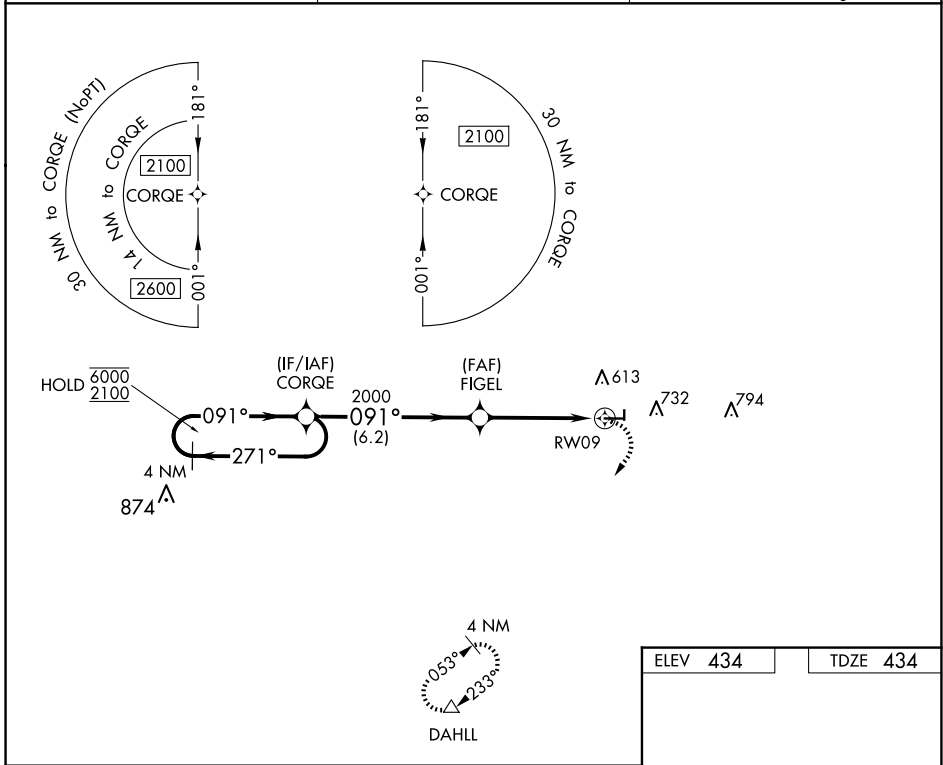
RNAV (GPS) RWY 9

FAIRFIELD MUNI (FWC)

RNP APCH. MISSED APPROACH: Climbing right turn to 3000 direct DAHLL and hold.

▼ Rwy 9 helicopter visibility reduction below 1 SM NA.
 Straight-in Rwy 9 NA at night, Circling Rwy 9, 27, 36 NA at night.

AWOS-3PT 119.425	KANSAS CITY CENTER 127.7 351.825	UNICOM 123.05 (CTAF) 0
----------------------------	--	----------------------------------



CATEGORY	A	B	C	D
LNVA MDA	880-1	446 (500-1)	880-1 ³ / ₈ 446 (500-1 ³ / ₈)	NA
C CIRCLING	1040-1	606 (700-1)	1100-1 ³ / ₄ 666 (700-1 ³ / ₄)	NA

REIL Rwy 9 0
 MIRL Rwy 9-27 and 18-36 0

EC-3, 15 MAY 2025 to 12 JUN 2025

EC-3, 15 MAY 2025 to 12 JUN 2025