

RNAV (GPS) RWY 14

GRAYLING AAF (GOV)

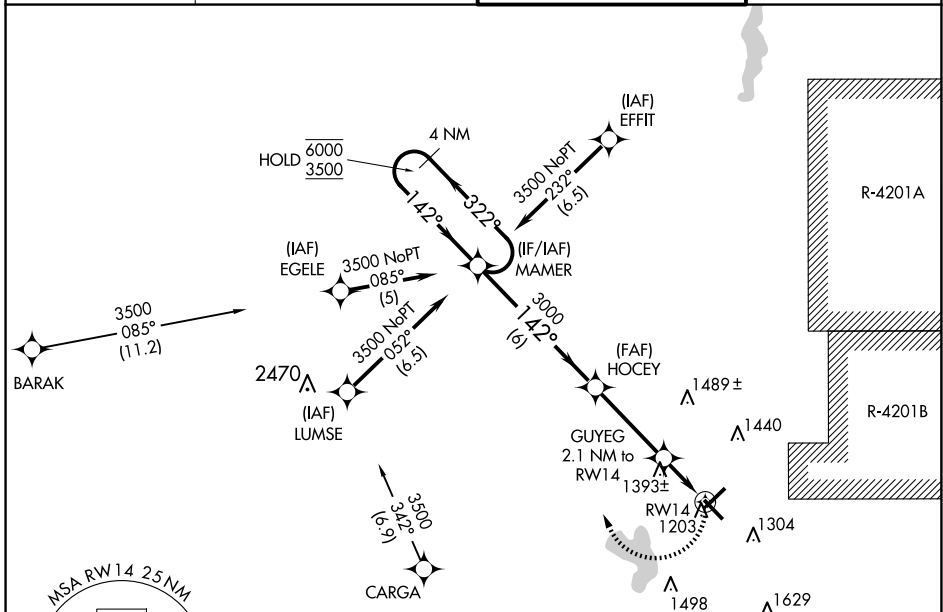
APP CRS	Rwy Idg	5005
142°	TDZE	1154
	Apt Elev	1158

RNP APCH - GPS

⚠ VDP NA when using HTL altimeter setting. Circling Rwy 5, 23, 32 NA at night.
⚠ Rwy 14 helicopter visibility reduction below $\frac{3}{4}$ SM NA. When local altimeter setting not received, use HTL altimeter setting and increase all MDAs 60 feet and LNAV visibility Cat C and D $\frac{1}{4}$ SM, and Circling visibility Cat C and D $\frac{1}{4}$ SM.

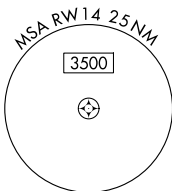
MISSED APPROACH: Climbing right turn to 3500 direct MAMER and hold.

ATIS 119.075	MINNEAPOLIS CENTER 125.475 269.45	GRAYLING TOWER ★ 126.2 (CTAF) ①	GND CON 121.9
------------------------	---------------------------------------------	-------------------------------------------	-------------------------



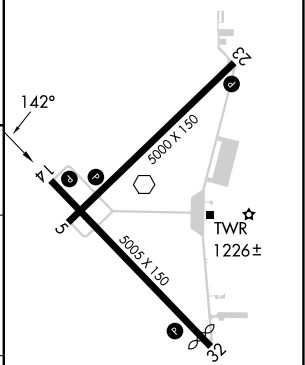
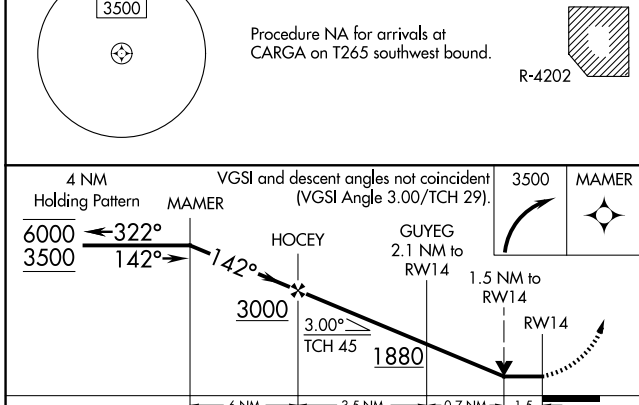
EC-1, 15 MAY 2025 to 12 JUN 2025

EC-1, 15 MAY 2025 to 12 JUN 2025



Procedure NA for arrivals at CARGA on T265 southwest bound.

ELEV 1158	TDZE 1154
-----------	-----------



CATEGORY	A	B	C	D
LNAV MDA	1660-1	506 (600-1)	1660-1 $\frac{3}{8}$	506 (600-1 $\frac{3}{8}$)
CIRCLING	1660-1 502 (600-1)	1720-1 562 (600-1)	1740-1 $\frac{1}{2}$ 582 (600-1 $\frac{1}{2}$)	1960-2 $\frac{1}{2}$ 802 (900-2 $\frac{1}{2}$)

REIL Rwys 5, 14, 23, and 32 ①
MRL Rwy 5-23 and 14-32 ①