

CHESTER, SOUTH CAROLINA

AL-5954 (FAA)

24249

NDB DCM <b>220</b>	APP CRS <b>340°</b>	Rwy ldg TDZE Apt Elev	<b>5000</b> <b>648</b> <b>657</b>
-----------------------	------------------------	-----------------------------	---

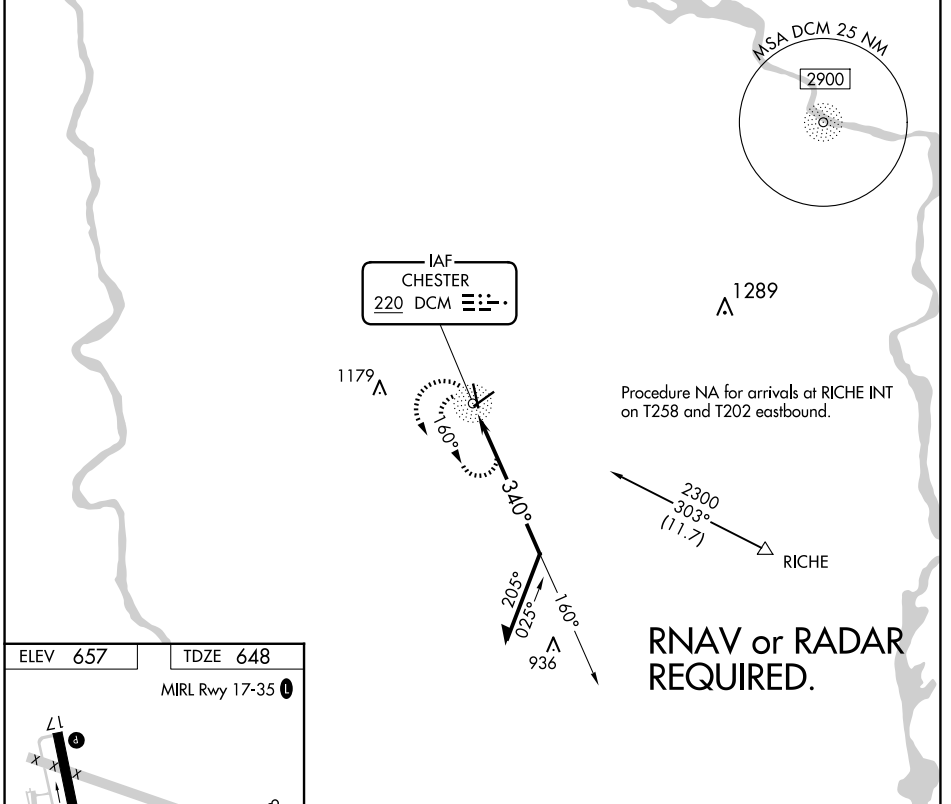
# NDB RWY 35

CHESTER CATAWBA RGNL (DCM)

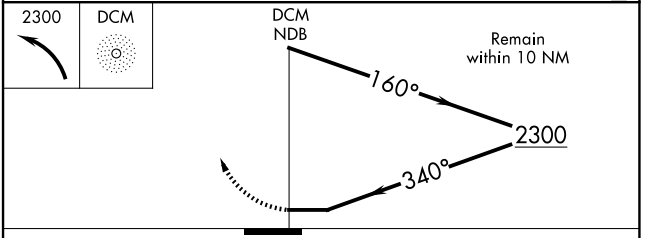
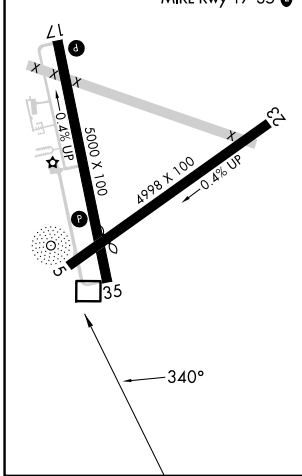
**⚠** Circling to Rwy 5/23 NA, at night. Rwy 35 helicopter visibility reduction below  $\frac{3}{4}$  SM NA. When local altimeter setting not received, use UZA altimeter setting and increase all MDAs 40 feet.

**⚠** MISSED APPROACH: Climbing left turn to 2300 in DCM NDB holding pattern.

AWOS-3 <b>120.975</b>	CHARLOTTE APP CON <b>120.05 307.8</b>	UNICOM <b>122.7 (CTAF) 0</b>
--------------------------	--	---------------------------------



ELEV 657	TDZE 648
----------	----------



CATEGORY	A	B	C	D
S-35	1340-1	692 (700-1)	1340-2	692 (700-2)
CIRCLING	1340-1	683 (700-1)	1340-2 683 (700-2)	1480-2 $\frac{3}{4}$ 823 (900-2 $\frac{3}{4}$ )

CHESTER, SOUTH CAROLINA  
Amdt 3 05SEP24

34°47'N-81°12'W

CHESTER CATAWBA RGNL (DCM)  
**NDB RWY 35**

SE-2, 15 MAY 2025 to 12 JUN 2025

SE-2, 15 MAY 2025 to 12 JUN 2025