

# MAYNR THREE DEPARTURE (RNAV)

SE-3, 15 MAY 2025 to 12 JUN 2025

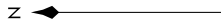
MIAMI DEP CON  
126.05 251.1  
ATIS  
119.85  
CLNC DEL  
127.95  
GND CON  
121.75  
EXECUTIVE TOWER  
120.9 239.3

# MAYNR THREE DEPARTURE (RNAV)

(MAYNR3.MAYNR) 31OCT24

FORT LAUDERDALE, FLORIDA  
FORT LAUDERDALE EXEC (FXE)

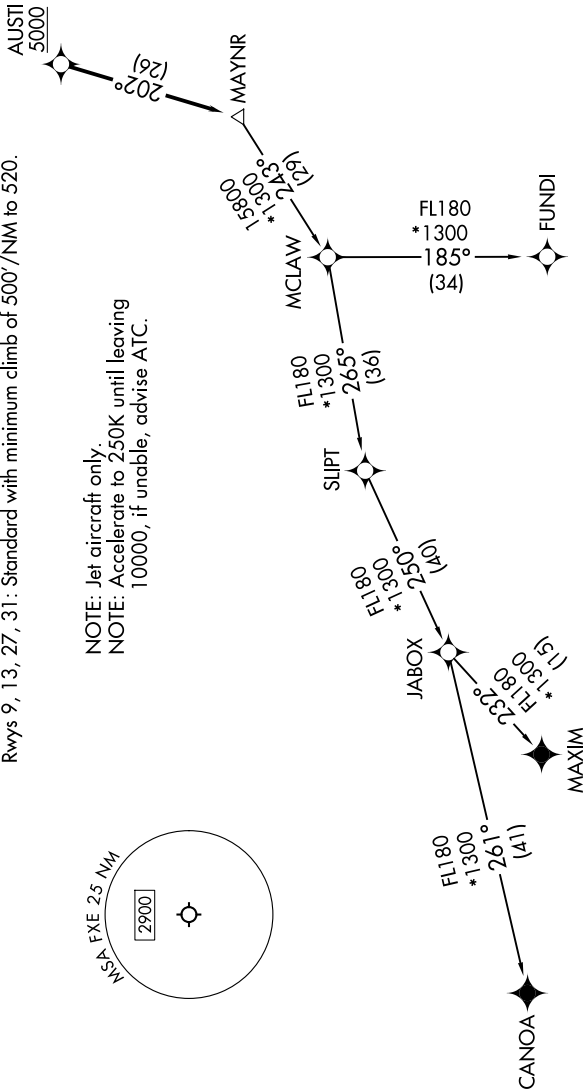
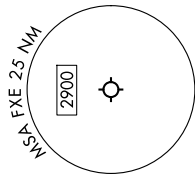
**TOP ALTITUDE:  
ASSIGNED BY ATC**



RNAV 1 - DME/DME/IRU or GPS.  
From SLOPT to MAXIM: RNAV 1 - GPS.  
From SLOPT to CANOA: RNAV 1 - GPS.  
RADAR required for non-GPS equipped aircraft.  
RADAR required.

**TAKEOFF MINIMUMS**  
Rwys 9, 13, 27, 31: Standard with minimum climb of 500'/NM to 520.

NOTE: Jet aircraft only.  
NOTE: Accelerate to 250K until leaving  
10000, if unable, advise ATC.



(COMPLETED ON FOLLOWING PAGE)

NOTE: Chart not to scale.

SE-3, 15 MAY 2025 to 12 JUN 2025