

APP CRS **088°**  
 Rwy Idg **N/A**  
 TDZE **N/A**  
 Apt Elev **496**

**RNAV (GPS)-A**  
 SKY KING (3I3)

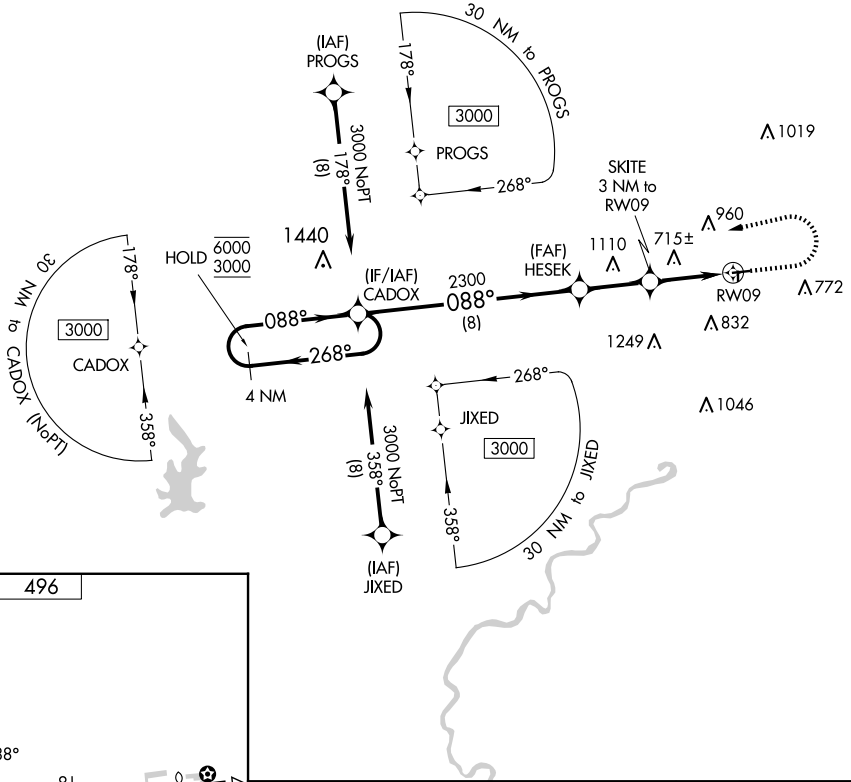
RNP APCH.

Procedure NA at night. Use Terre Haute altimeter setting; when not received, use Paris altimeter setting and increase all MDA 40 feet.

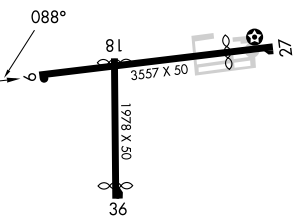
MISSED APPROACH: Climb to 1400 then climbing left turn to 3000 direct CADOX and hold.

HULMAN APP CON  
**125.45 339.8**

UNICOM  
**122.8 (CTAF)**



ELEV **496**



	4 NM Holding Pattern	CADOX	HESEK	SKITE 3 NM to RW09	RW09
	6000	3000	2300	1480	
	← 268°	→ 088°	→ 088°	→ 3.00° TCH 40	→
			8 NM	2.6 NM	3 NM
CATEGORY	A	B	C	D	
<b>CIRCLING</b>	1000-1 504 (600-1)	1340-1¼ 844 (900-1¼)			NA

LURL Rwy 9-27 and 18-36

EC-2, 15 MAY 2025 to 12 JUN 2025

EC-2, 15 MAY 2025 to 12 JUN 2025