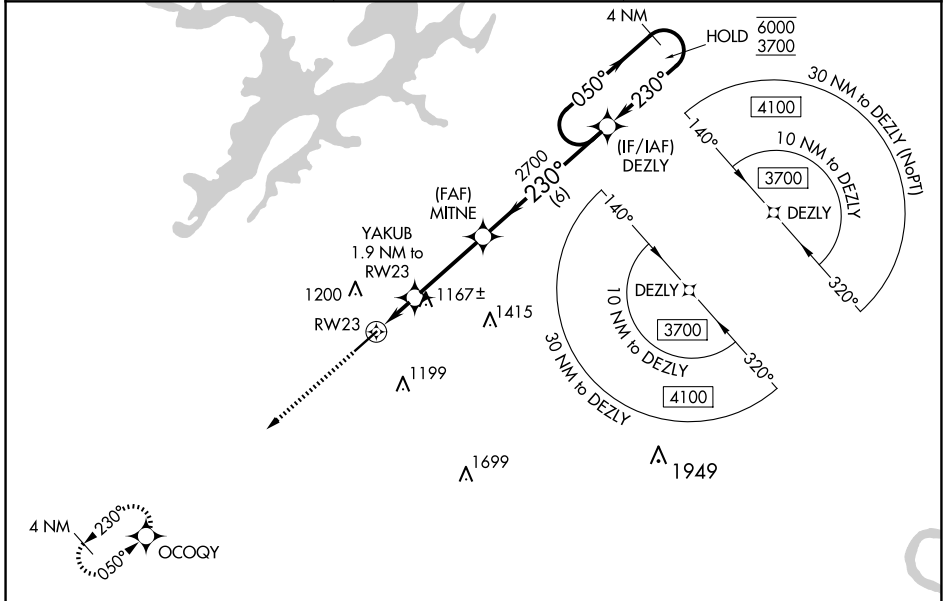


WAAS CH 99604 W23A	APP CRS 230°	Rwy Idg TDZE Apt Elev	6114 1032 1032
--	------------------------	-----------------------------	---

RNAV (GPS) RWY 23

ALBERTVILLE RGNL/THOMAS J BRUMLIK FLD (B'F'Z)

RNP APCH - GPS.		MISSED APPROACH: Climb to 3700 direct OCOGY and hold, continue climb-in-hold to 3700.
AWOS-3PT 119.575	BIRMINGHAM APP CON 125.45 279.65	UNICOM 123.0 (CTAF) 0



SE-4, 15 MAY 2025 to 12 JUN 2025

SE-4, 15 MAY 2025 to 12 JUN 2025

ELEV 1032	TDZE 1032																			
		<table border="1"> <tr> <td>3700 OCOGY</td> <td colspan="3"></td> <td>4 NM Holding Pattern</td> </tr> <tr> <td>YAKUB 1.9 NM to RWY 23</td> <td>MITNE 2700</td> <td colspan="2">DEZLY</td> <td>6000 / 3700</td> </tr> <tr> <td>1.2 NM</td> <td>0.8 NM</td> <td>3.2 NM</td> <td>6 NM</td> <td>GP 3.00° TCH 42</td> </tr> </table>				3700 OCOGY				4 NM Holding Pattern	YAKUB 1.9 NM to RWY 23	MITNE 2700	DEZLY		6000 / 3700	1.2 NM	0.8 NM	3.2 NM	6 NM	GP 3.00° TCH 42
3700 OCOGY				4 NM Holding Pattern																
YAKUB 1.9 NM to RWY 23	MITNE 2700	DEZLY		6000 / 3700																
1.2 NM	0.8 NM	3.2 NM	6 NM	GP 3.00° TCH 42																
CATEGORY	A	B	C	D																
LPV DA	1282- ³ / ₄		250 (300- ³ / ₄)																	
LNAV/VNAV DA	1437-1 ¹ / ₈		405 (500-1 ¹ / ₈)																	
LNAV MDA	1440-1 408 (500-1)		1440-1 ¹ / ₈ 408 (500-1 ¹ / ₈)																	
C CIRCLING	1480-1 448 (500-1)	1500-1 468 (500-1)	1500-1 ¹ / ₂ 468 (500-1 ¹ / ₂)	1680-2 648 (700-2)																