

RNAV (GPS) RWY 35

ONTONAGON COUNTY/SCHUSTER FLD (OGM)

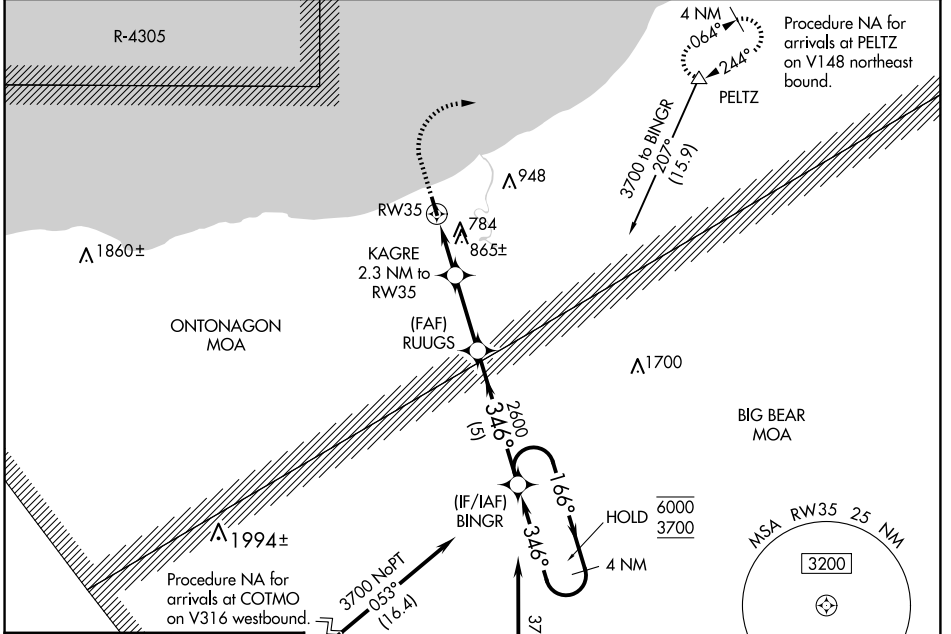
| | | |
|-------------|----------|-------------|
| APP CRS | Rwy Idg | 3503 |
| 346° | TDZE | 665 |
| | Apt Elev | 665 |

RNP APCH - GPS.

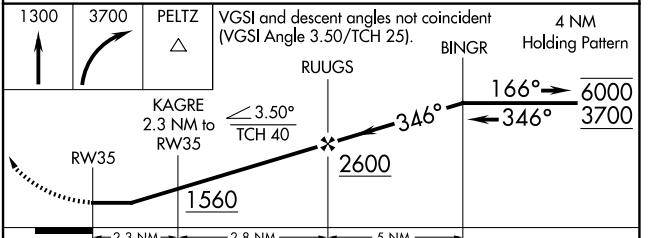
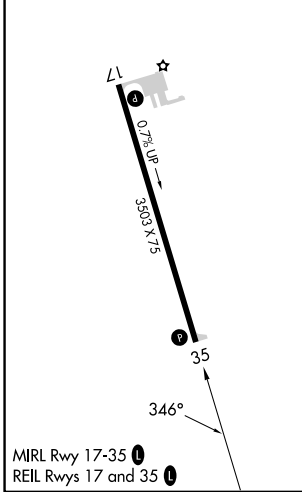
▼ Rwy 35 helicopter visibility reduction below 1 SM NA.
▲ NA Procedure NA at night. Use CMX altimeter setting.

MISSED APPROACH: Climb to 1300 then climbing right turn to 3700 direct PELTZ and hold, continue climb-in-hold to 3700.

| | | |
|----------------------------|---|----------------------|
| CMX ASOS 125.675 | MINNEAPOLIS CENTER 133.55 379.1 | CTAF 122.9 |
|----------------------------|---|----------------------|



| | |
|-----------------|-----------------|
| ELEV 665 | TDZE 665 |
|-----------------|-----------------|



| CATEGORY | A | B | C | D |
|-------------------|--------|-------------|--|----|
| LNAV MDA | 1280-1 | 615 (700-1) | 1280-1 ³ / ₄ 615 (700-1 ³ / ₄) | NA |
| C CIRCLING | 1320-1 | 655 (700-1) | 1420-2 ¹ / ₄ 755 (800-2 ¹ / ₄) | NA |

EC-1, 15 MAY 2025 to 12 JUN 2025

EC-1, 15 MAY 2025 to 12 JUN 2025