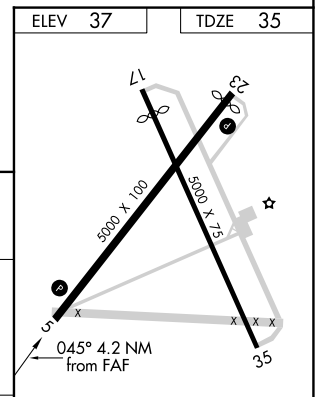
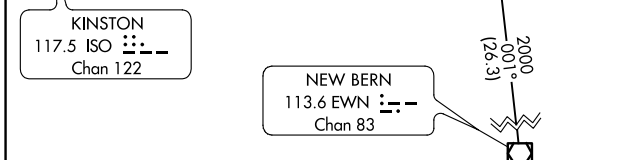
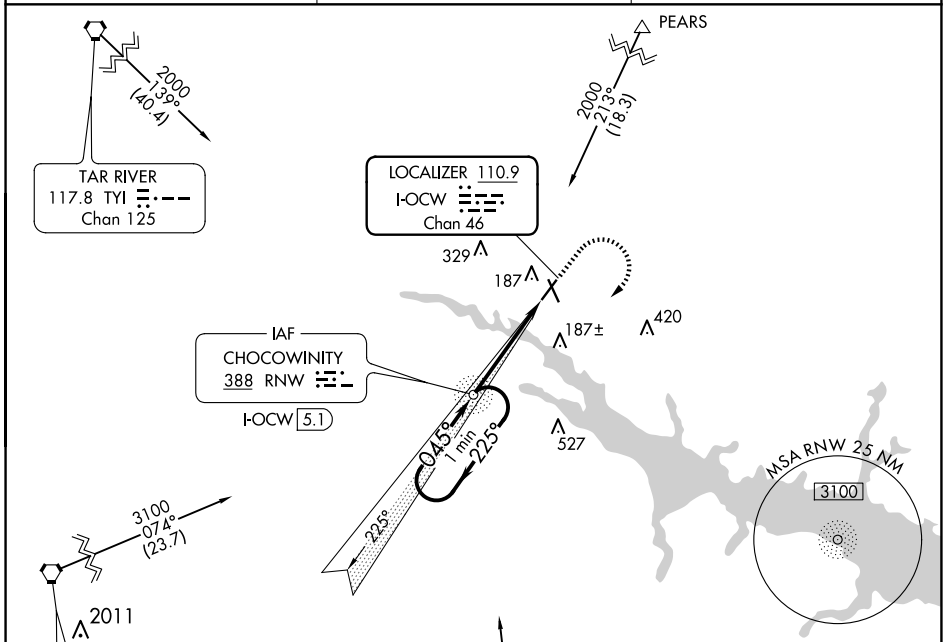


LOC/DME I-OCW	APP CRS	Rwy Idg	5000
110.9	045°	TDZE	35
Chan 46		Apt Elev	37

LOC RWY 5

WASHINGTON-WARREN (OCW)

ADF required.		MISSED APPROACH: Climb to 1000, then climbing right turn to 1600 direct RNW NDB and hold.
AWOS-3	CHERRY POINT APP CON	UNICOM
120.175	119.35 377.175	122.7 (CTAF) 0



VGSIs and descent angles not coincident (VGSIs Angle 3.00/TCH 46).			
One Minute Holding Pattern	RNW NDB I-OCW 5.1	1000	1600
		↑	↷
			○
1600	← 225°	→ 045°	
			↘ 045°
			↓ 3.41° TCH 46
			I-OCW 2.1
			I-OCW 0.9
			2.9 NM
			1.3

CATEGORY	A	B	C	D	ELEV 37	TDZE 35
S-5	480-1	445 (500-1)	480-1 $\frac{3}{8}$	445 (500-1 $\frac{3}{8}$)		
CIRCLING	540-1	503 (600-1)	640-1 $\frac{3}{4}$	780-2 $\frac{1}{2}$		
			603 (700-1 $\frac{3}{4}$)	743 (800-2 $\frac{1}{2}$)		
					REIL Rwy 5 and 23 0	
					MIRL Rwys 5-23 0	
					FAF to MAP 4.2 NM	
					Knots	60 90 120 150 180
					Min:Sec	4:12 2:48 2:06 1:41 1:24

SE-2, 15 MAY 2025 to 12 JUN 2025

SE-2, 15 MAY 2025 to 12 JUN 2025