

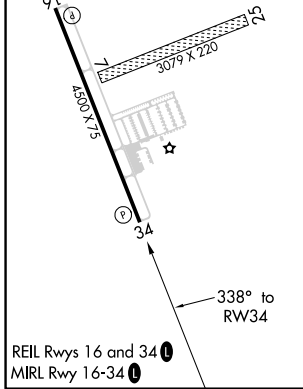
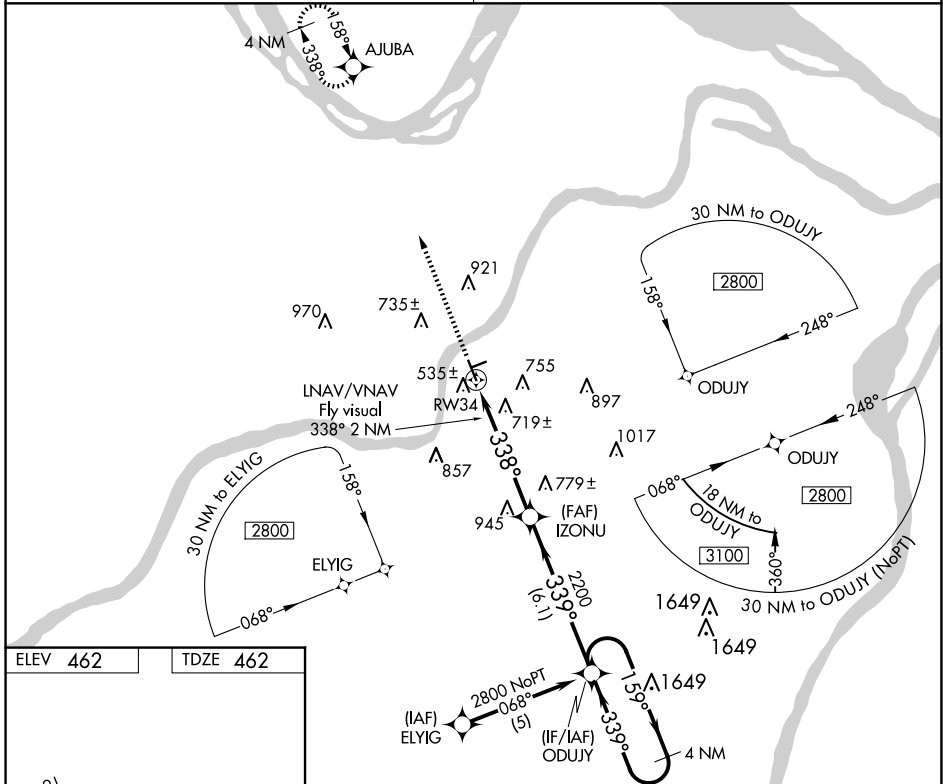
WAAS CH 93905 W34A	APP CRS 338°	Rwy Idg TDZE Apt Elev	4500 462 462
--	------------------------	-----------------------------	---

RNAV (GPS) RWY 34

CREVE COEUR (1H0)

RNP APCH.	MISSED APPROACH:
<p>▼ Use St Louis Lambert Intl altimeter setting. Baro-VNAV NA. Circling Rwy 16 NA at night.</p> <p>▲ NA Circling NA to Rws 7 and 25. Rwy 34 helicopter visibility reduction below ¾ SM NA.</p>	<p>Climb to 2700 direct AJUBA and hold.</p>

ST. LOUIS APP CON 126.5 254.3	UNICOM 122.8 (CTAF)
---	-------------------------------



2700	AJUBA	VGSi and RNAV glidepath not coincident. (VGSi Angle 3.00/TCH 43).	4 NM Holding Pattern
	IZONU		ODUJY
	RW34		2800
	LNNAV/VNAV Fly visual 338° 2 NM		GP 3.00° TCH 30
		5.3 NM	6.1 NM

CATEGORY	A	B	C	D
LPV DA	809-1¼ 347 (400-1¼)			NA
LNNAV/VNAV DA	1131-2	669 (700-2)		NA
LNNAV MDA	1080-1	618 (700-1)		NA
CIRCLING	1080-1	1120-1		
	618 (700-1)	658 (700-1)		NA

NC-3, 15 MAY 2025 to 12 JUN 2025

NC-3, 15 MAY 2025 to 12 JUN 2025