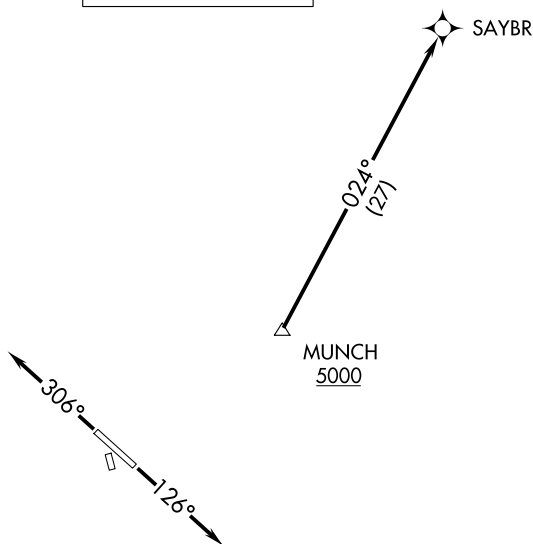


SAYBR THREE DEPARTURE (RNAV)

AWOS-3
 118.825
 CLNC DEL
 126.025 (When twr closed)
 EXECUTIVE TOWER★
 120.3 (CTAF)
 UNICOM
 122.975
 AUSTIN DEP CON
 127.225 317.65

**TOP ALTITUDE:
 ASSIGNED BY ATC**



- NOTE: RADAR required.
- NOTE: DME/DME/IRU or GPS required.
- NOTE: RNAV 1.
- NOTE: For DFW terminal area arrivals at FL230 or below only.

TAKEOFF MINIMUMS

Rwys 16, 34: NA-Environmental.

Rwys 13, 31: Standard.

NOTE: Chart not to scale.



DEPARTURE ROUTE DESCRIPTION

TAKEOFF RUNWAY 13: Climb on heading 126° or as assigned by ATC for vectors to cross MUNCH at or above 5000, thence. . . .

TAKEOFF RUNWAY 31: Climb on heading 306° or as assigned by ATC for vectors to cross MUNCH at or above 5000, thence. . . .

. . . .on track 024° to SAYBR. Maintain altitude assigned by ATC.
 Expect filed altitude 10 minutes after departure.