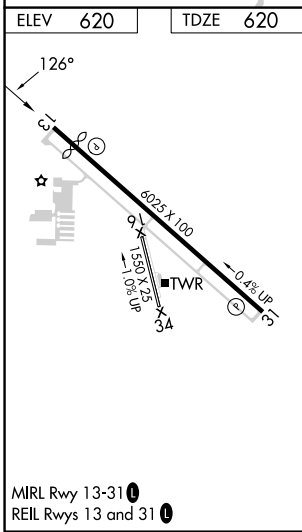
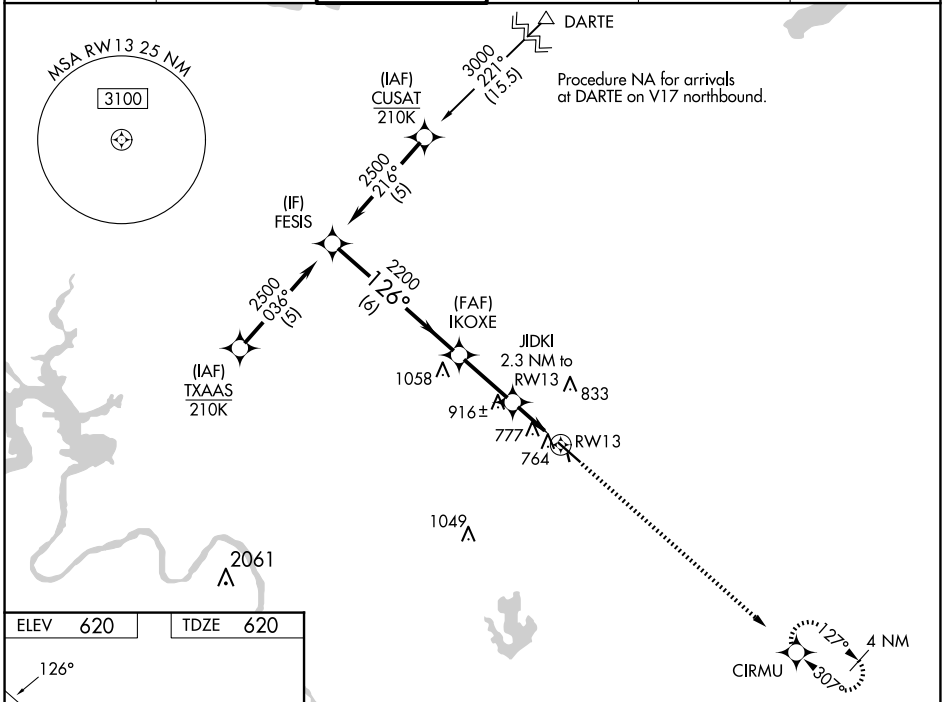


WAAS CH <b>63116</b> <b>W13A</b>	APP CRS <b>126°</b>	Rwy Idg TDZE Apt Elev	<b>5425</b> <b>620</b> <b>620</b>
--	------------------------	-----------------------------	---

# RNAV (GPS) RWY 13

AUSTIN EXEC (EDC)

RNP APCH - GPS.		<p><b>⚠</b> Circling NA to Rwy 16 and 34. Rwy 13 helicopter visibility reduction below <math>\frac{3}{4}</math> SM NA. For uncompensated Baro-VNAV systems, LNAV/VNAV NA below -16°C or above 54°C.</p>		<p>MISSED APPROACH: Climb to 2200 direct CIRMU and hold.</p>	
AWOS-3 <b>118.825</b>	AUSTIN APP CON <b>127.225 317.65</b>	EXECUTIVE TOWER* <b>120.3 (CTAF) 0</b>	GND CON <b>119.45</b>	CLNC DEL <b>126.025</b> (When twr closed)	UNICOM <b>122.975</b>



	FESIS	IKOXE	JIDKI	RWY 13	CIRMU
	2500	2200	2200	1380	2200
		126°	2.3 NM to RWY 13	1.3 NM to RWY 13	4 NM
			6 NM	2.5 NM	1 NM
				1.3 NM	
GP 3.00° TCH 40					
CATEGORY	A	B	C	D	
LPV DA		870- $\frac{3}{4}$ 250 (300- $\frac{3}{4}$ )			
LNAV/VNAV DA		1080-1 $\frac{3}{8}$ 460 (500-1 $\frac{3}{8}$ )			
LNAV MDA	1080-1	460 (500-1)	1080-1 $\frac{3}{8}$ 460 (500-1 $\frac{3}{8}$ )		
<b>C</b> CIRCLING	1140-1 520 (600-1)	1160-1 540 (600-1)	1280-1 $\frac{3}{4}$ 660 (700-1 $\frac{3}{4}$ )	1280-2 660 (700-2)	

SC-3, 15 MAY 2025 to 12 JUN 2025

SC-3, 15 MAY 2025 to 12 JUN 2025