

APP CRS <b>166°</b>	Rwy Idg TDZE Apt Elev	<b>N/A</b> <b>N/A</b> <b>7838</b>
------------------------	-----------------------------	---

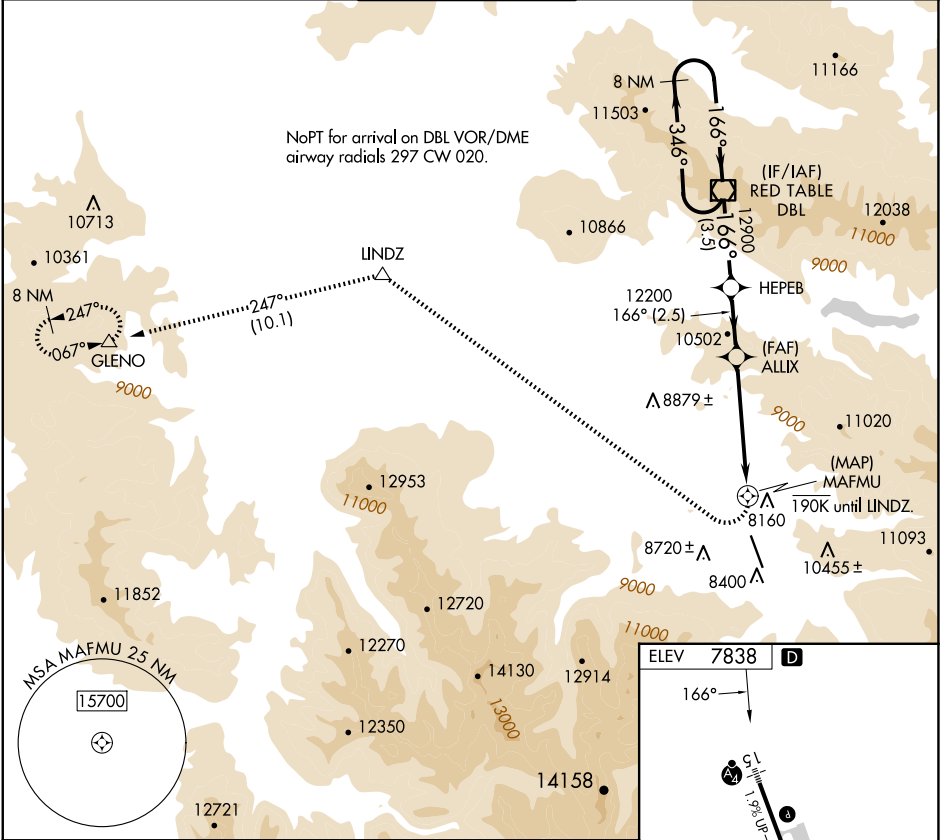
# RNAV (GPS)-F

ASPEN-PITKIN COUNTY/SARDY FLD (A5E)

When local altimeter setting not received, procedure NA.  
 DME/DME RNP-0.3 NA. Visibility reduction by helicopters NA.  
 Procedure NA at night. Circling NA for Cat C southwest of Rwy 15-33.

MISSED APPROACH: Climbing right turn to 14000 direct LINDZ and on track 247° to GLENO and hold.

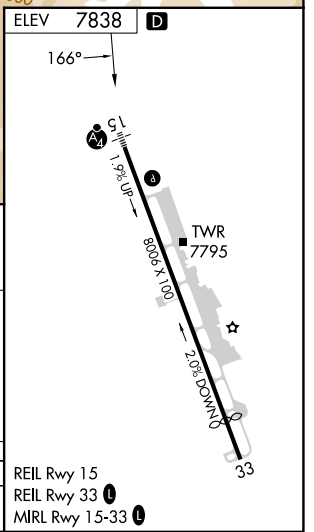
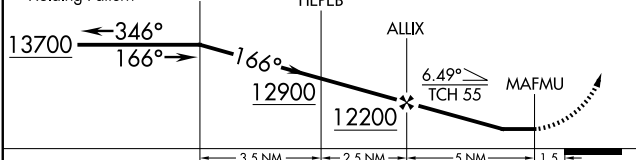
ATIS <b>120.4</b>	ASPEN APP CON ★ <b>123.8 288.3</b>	ASPEN TOWER ★ <b>118.85 (CTAF) 288.3</b>	GND CON <b>121.9</b>	CLNC DEL <b>123.75</b>	UNICOM <b>122.95</b>
----------------------	---------------------------------------	---	-------------------------	---------------------------	-------------------------



VGSI and descent angles not coincident (VGSI Angle 3.50/TCH 55).

14000	LINDZ	tr 247°	GLENO
	△		△

8 NM Holding Pattern DBL VOR/DME HEPEB



CATEGORY	A	B	C	D	REIL Rwy 15
CIRCLING	10200-1¾ 2362 (2400-1¾)	10220-1¾ 2382 (2400-1¾)	10960-3 3122 (3200-3)	NA	REIL Rwy 33 MIRL Rwy 15-33

SW-1, 15 MAY 2025 to 12 JUN 2025

SW-1, 15 MAY 2025 to 12 JUN 2025