


WAAS CH 61199 W18A	APP CRS 181°	Rwy Idg TDZE Apt Elev	6000 402 402
--	------------------------	-----------------------------	---

RNAV (GPS) RWY 18

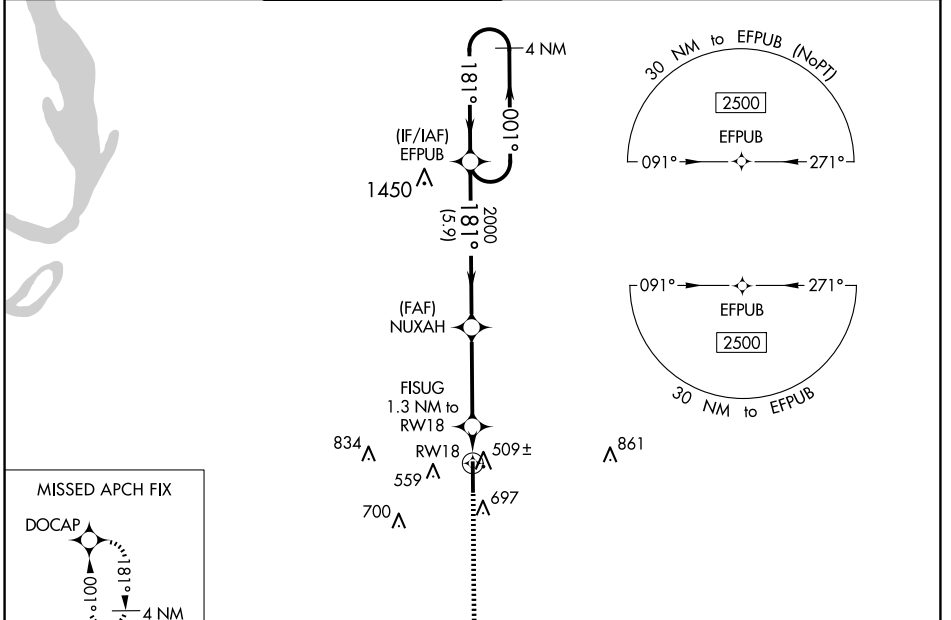
OLIVE BRANCH/TAYLOR FLD (OLV)

⚠ For uncompensated Baro-VNAV systems, LNAV/VNAV NA below -15°C (5°F) or above 54°C (130°F). DME/DME RNP-0.3 NA. When local altimeter setting not received, use Memphis Intl altimeter setting and increase all DA 32 feet and all MDA 40 feet; increase LNAV/VNAV all Cats visibility 1/8 mile and Circling Cats C and D visibility 1/4 mile.

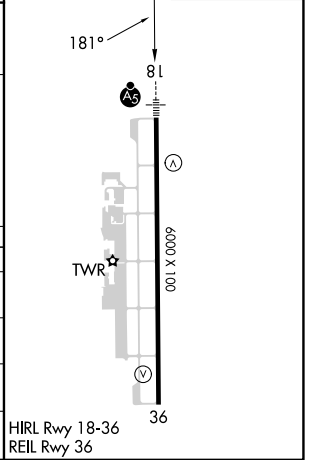
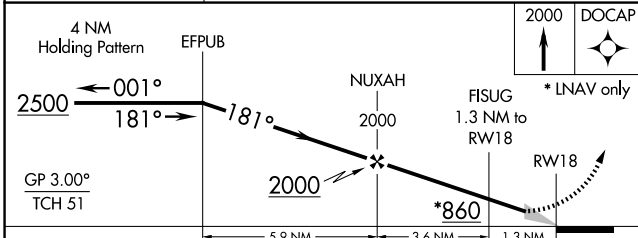
MALS 

MISSED APPROACH: Climb to 2000 direct DOCAP and hold.

ATIS 119.925	MEMPHIS APP CON 125.8 338.3	OLIVE BRANCH TOWER * 125.275 (CTAF) 0	GND CON 121.2	CLNC DEL 121.2	CLNC DEL 121.3 (When twr closed)	UNICOM 122.95
------------------------	---------------------------------------	---	-------------------------	--------------------------	---	-------------------------



ELEV 402	TDZE 402
----------	----------



CATEGORY	A	B	C	D
LPV DA		602-1/2	200 (200-1/2)	
LNAV/VNAV DA		691-1/2	289 (300-1/2)	
LNAV MDA	760-1/2	358 (400-1/2)	760-5/8	358 (400-5/8)
C CIRCLING	1060-1	658 (700-1)	1060-1 3/4 658 (700-1 3/4)	1200-2 1/2 798 (800-2 1/2)

SC-4, 15 MAY 2025 to 12 JUN 2025

SC-4, 15 MAY 2025 to 12 JUN 2025