

WAAS CH 87104 W18A	APP CRS 185°	Rwy Idg 5004 TDZE 418 Apt Elev 418
--	------------------------	---

RNAV (GPS) RWY 18

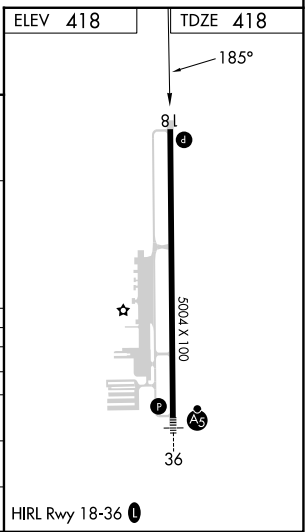
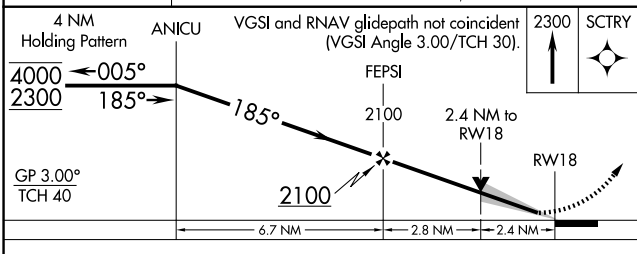
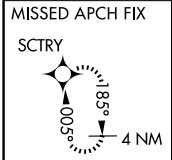
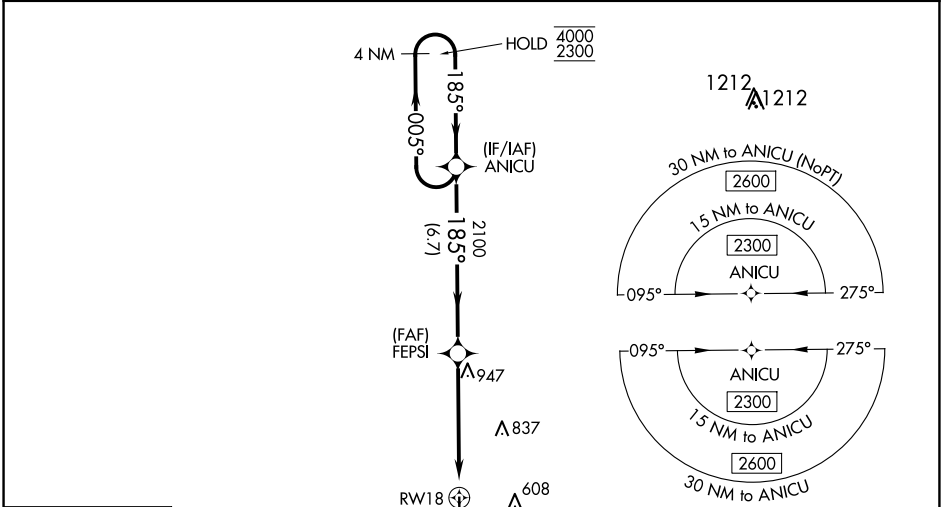
PERRY-HOUSTON COUNTY (PXE)

RNP APCH-GPS.

▼ Baro-VNAV and VDP NA when using Middle Georgia Rgnl altimeter setting.
 ▲ For uncompensated Baro-VNAV systems, LNAV/VNAV NA below -15°C or above 54°C.
 When local altimeter setting not received, use Middle Georgia Rgnl altimeter setting and increase LPV DA to 656 feet; increase LNAV/VNAV DA to 857 feet and all visibilities ½ SM. Increase all MDAs 40 feet; and Circling visibility Cat A and D ¼ SM.

MISSED APPROACH: Climb to 2300 direct SCTRY and hold.

AWOS-3 123.825	ATLANTA APP CON ★ 124.2 279.6	UNICOM 122.725 (CTAF) 0
--------------------------	---	-----------------------------------



CATEGORY	A	B	C	D
LPV DA	618-3/4 200 (200-3/4)			
LNAV/VNAV DA	819-1 1/8 401 (500-1 1/8)			
LNAV MDA	1200-1 782 (800-1)	1200-1 1/4 782 (800-1 1/4)	1200-2 1/2 782 (800-2 1/2)	782 (800-2 1/2)
CIRCLING	1200-1 782 (800-1)	1200-1 1/4 782 (800-1 1/4)	1200-2 1/2 782 (800-2 1/2)	1280-2 3/4 862 (900-2 3/4)

HIRL Rwy 18-36 0

SE-4, 15 MAY 2025 to 12 JUN 2025

SE-4, 15 MAY 2025 to 12 JUN 2025