

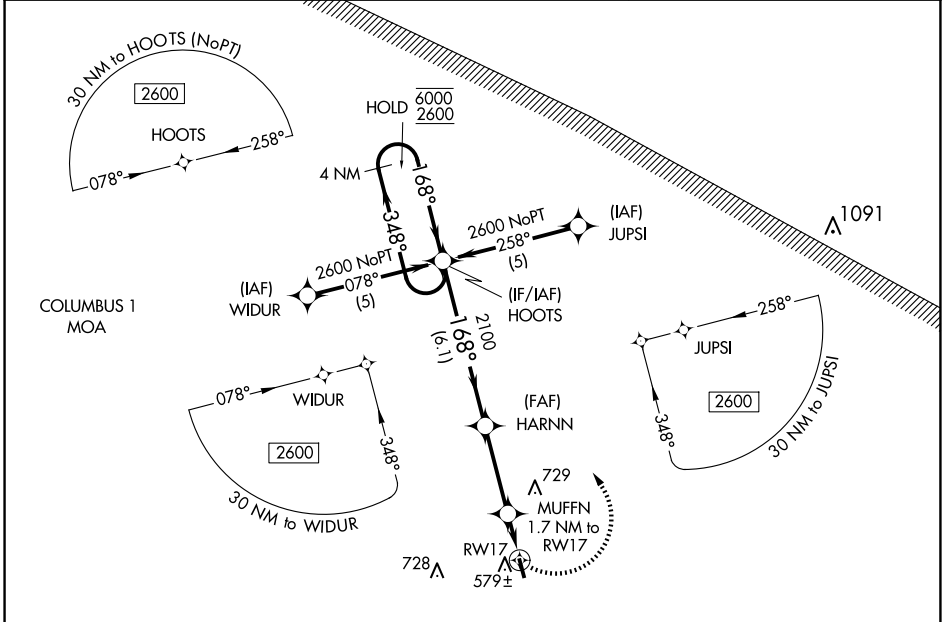
APP CRS	Rwy Idg	3613
168°	TDZE	463
	Apt Elev	463

RNAV (GPS) RWY 17

LAMAR COUNTY (M55)

RNP APCH.	MISSED APPROACH: Climbing left turn to 2600 direct HOOTs and hold.
<p>▼ Rwy 17 helicopter visibility reduction below 1 SM NA. Use Columbus AFB altimeter setting. Procedure NA at night.</p> <p>▲ NA</p>	

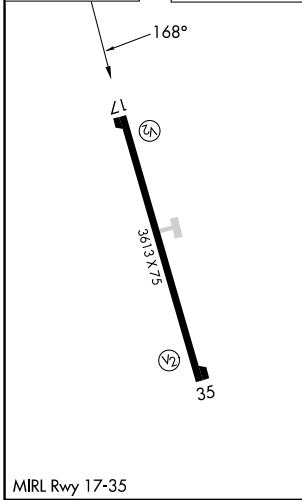
KCBM ATIS★ 115.2 273.5	COLUMBUS APP CON★ 126.075 239.25	CTAF 122.9
----------------------------------	--	----------------------



SE-4, 15 MAY 2025 to 12 JUN 2025

SE-4, 15 MAY 2025 to 12 JUN 2025

ELEV 463	TDZE 463
-----------------	-----------------



4 NM Holding Pattern		2600	HOOTs
<p>6000 ← 348°</p> <p>2600 168° →</p> <p>768°</p> <p>HARNN</p> <p>2100</p> <p>3.04° ≥ TCH 40</p> <p>MUFFN 1.7 NM to RW17</p> <p>1040</p> <p>RW17</p>			
		6.1 NM	3.3 NM
			1.7 NM
CATEGORY	A	B	C
LNAV MDA	960-1	497 (500-1)	960-1½ 497 (500-1½)
CIRCLING	1100-1	637 (700-1)	1180-2 717 (800-2)
			D
			1180-2¼ 717 (800-2¼)