

VORTAC IGB <b>116.2</b> Chan <b>109</b>	APP CRS <b>124°</b>	Rwy Idg TDZE Apt Elev <b>N/A</b> <b>N/A</b> <b>205</b>
---	------------------------	---

# VOR/DME-B

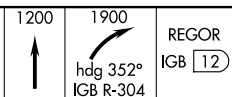
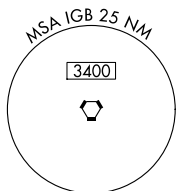
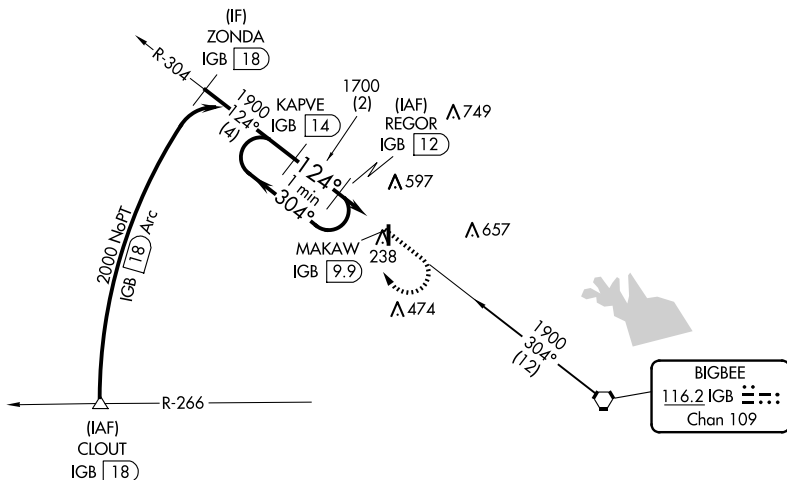
MCCHAREN FLD (M83)

**▼** Use Golden Triangle Rgnl altimeter setting, when not received, use Columbus AFB altimeter setting. Helicopter visibility reduction below 1 SM NA. Procedure NA at night.  
**▲ NA**

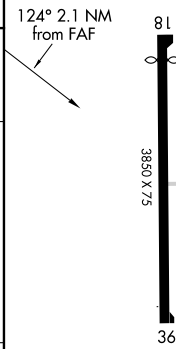
**MISSED APPROACH:** Climb to 1200 then climbing right turn to 1900 heading 352° and via IGB R-304 to REGOR/IGB 12 DME and hold.

COLUMBUS APP CON \*  
**135.6 323.275**

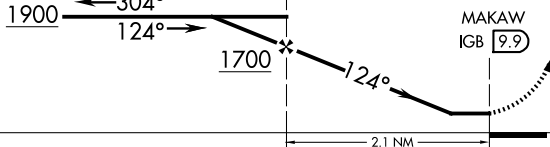
CTAF  
**122.9**



1005  
ELEV 205



One Minute Holding Pattern



CATEGORY	A	B	C	D
<b>CIRCLING</b>	920-1 715 (800-1)	940-1 735 (800-1)	940-2 735 (800-2)	NA

MIRL Rwy 18-36

SC-4, 15 MAY 2025 to 12 JUN 2025

SC-4, 15 MAY 2025 to 12 JUN 2025