

APP CRS	Rwy Idg	<b>3460</b>
<b>180°</b>	TDZE	<b>205</b>
	Apt Elev	<b>205</b>

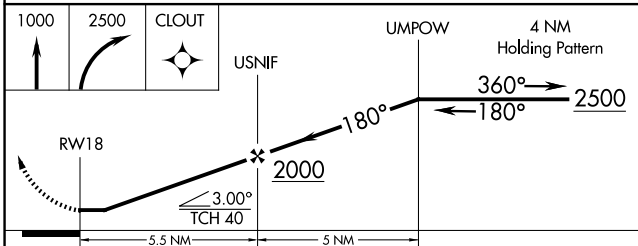
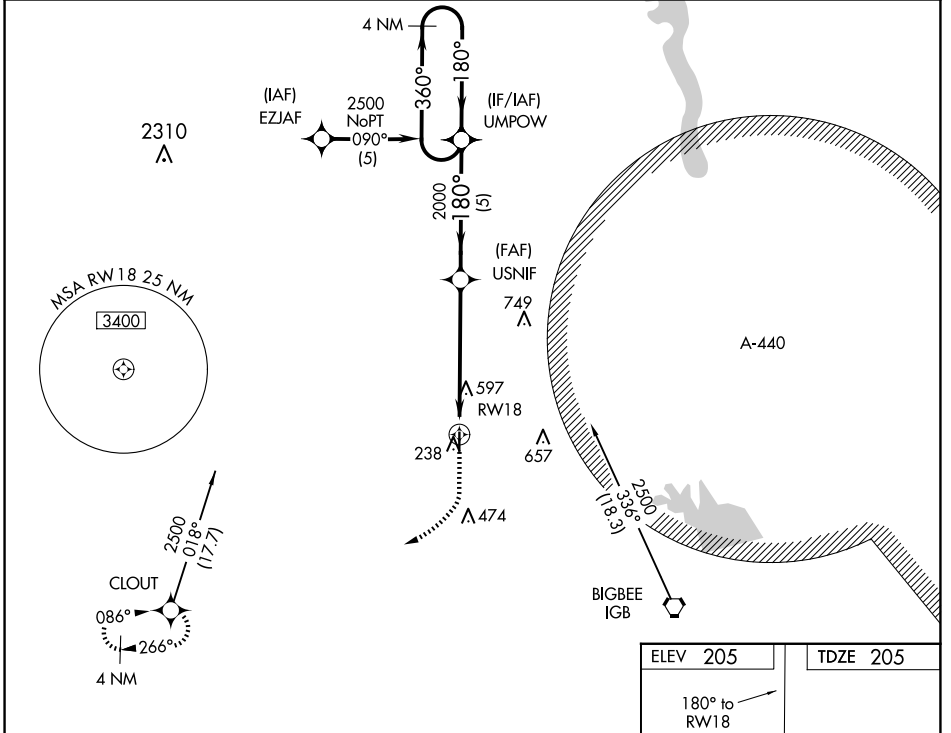
# RNAV (GPS) RWY 18

MCCHAREN FLD (M83)

**▼** Use Golden Triangle Rgnl altimeter setting, when not received, use Columbus AFB altimeter setting. DME/DME RNP-0.3 NA. Helicopter visibility reduction below 1 SM NA. Procedure NA at night.

**▲ NA** MISSED APPROACH: Climb to 1000 then climbing right turn to 2500 direct CLOUT and hold.

COLUMBUS APP CON* <b>135.6 323.275</b>	CTAF <b>122.9</b>
---	----------------------



ELEV 205	TDZE 205
180° to RWY 18	
81	
3650 X 75	
36	
MIRL Rwy 18-36	

CATEGORY	A	B	C	D
GLS DA	NA			
LNAV/VNAV DA	NA			
LNAV MDA	980-1 775 (800-1)	980-1¼ 775 (800-1¼)	980-2½ 775 (800-2½)	NA
CIRCLING	980-1 775 (800-1)	1020-1¼ 815 (900-1¼)	1020-2½ 815 (900-2½)	NA

SC-4, 15 MAY 2025 to 12 JUN 2025

SC-4, 15 MAY 2025 to 12 JUN 2025