

WAAS CH 77606 W04A	APP CRS 038°	Rwy Idg TDZE Apt Elev	5000 316 316
--	------------------------	-----------------------------	---

RNAV (GPS) RWY 4

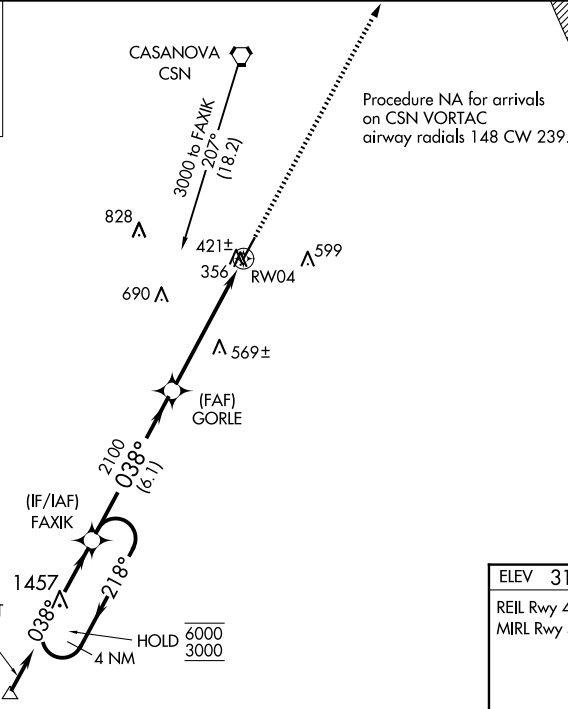
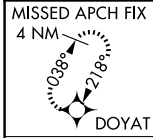
CULPEPER RGNL (CJR)

RNP APCH - GPS.

⚠ Rwy 4 helicopter visibility reduction below 1 SM NA. Baro-VNAV NA when using IAD alimeter setting. For uncompensated Baro-VNAV systems, LNAV/VNAV NA below -15°C or above 48°C. When local alimeter setting not received, use IAD alimeter setting and increase LPV DA to 683 feet; increase LNAV/VNAV DA to 906 feet; increase all MDAs 80 feet and visibility Cats C/D ¼ SM. Straight-in Rwy 4 at night, Circling Rwy 4, 22 at night, operational VGSI required, remain on or above VGSI glidepath until threshold.

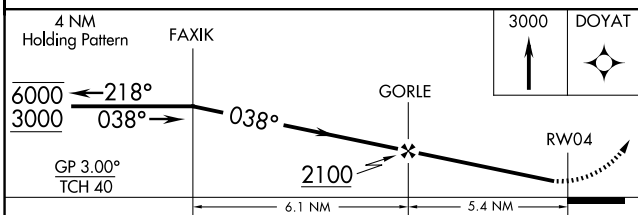
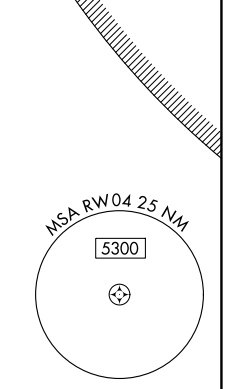
MISSED APPROACH:
Climb to 3000 direct DOYAT and hold.

AWOS-3 119.325	POTOMAC APP CON 128.525 306.925	CLNC DEL 121.6	UNICOM 123.075 (CTAF) ①
--------------------------	---	--------------------------	-----------------------------------

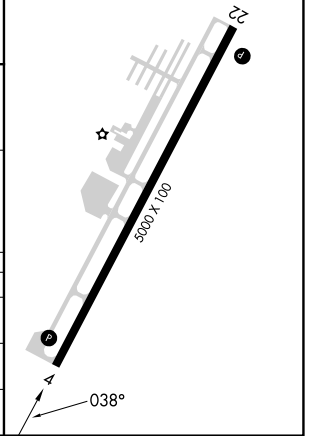


WARNING --
WASHINGTON DC SFRA.
CONTACT POTOMAC APP CON

WASHINGTON DC METROPOLITAN SFRA



ELEV 316	TDZE 316
REIL Rwy 4 and 22 ①	MIRL Rwy 4-22 ①



CATEGORY	A	B	C	D
LPV DA	610-1 294 (300-1)			
LNAV/VNAV DA	833-1¾ 517 (600-1¾)			
LNAV MDA	820-1 504 (600-1)		820-1½ 504 (600-1½)	

NE-3, 15 MAY 2025 to 12 JUN 2025

NE-3, 15 MAY 2025 to 12 JUN 2025