

NDB HS	APP CRS	Rwy Idg	8498
221	181°	TDZE	23
		Apt Elev	23

NDB RWY 18

STENNIS INTL (HSA)

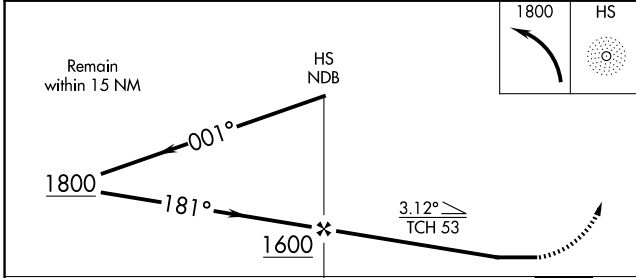
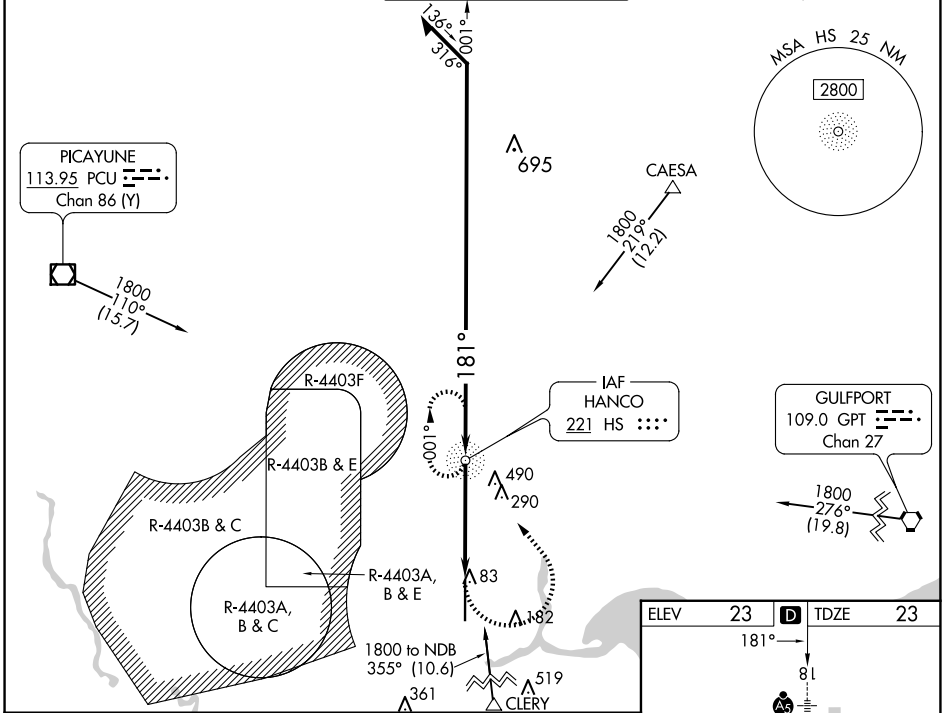
Procedure NA when R4403B and R4403E are active. Circling NA for Cat E west of Rwy 18-36.
⚠ When local altimeter setting not received use Gulfport altimeter setting and increase all MDAs: 60 feet and increase S-18 Cat C/D/E and Circling Cat C visibility 1/8 SM and Circling Cat D/E visibility 1/4 SM. For inop ALS, increase S-18 Cat A/B visibility to 1 SM, and Cat C/D/E visibility to 1 1/2 SM. For inop ALS when using Gulfport altimeter setting, increase Cat C/D/E visibility to 1 1/2 SM.

MALSR



MISSED APPROACH:
 Climbing left turn to 1800 direct HS NDB and hold.

AWOS-3PT 118.375	GULFPORT APP CON* 124.6 354.1 (130°-309°) 127.5 254.25 (310°-129°)	STENNIS TOWER* 127.15 (CTAF) 0 229.4	GND CON 121.725 229.4	UNICOM 122.95
----------------------------	--	---	---------------------------------	-------------------------



ELEV	23	D	TDZE	23		
181°						
REIL Rwy 36	36					
HIRL Rwy 18-36	36					
FAF to MAP 4.3 NM						
CATEGORY	A	B	C	D	E	
S-18	600-3/4	577 (600-3/4)	600-1 1/4	577 (600-1 1/4)		
C CIRCLING	600-1	577 (600-1)	600-1 5/8	820-2 1/2	820-2 3/4	
			577 (600-1 5/8)	797 (800-2 1/2)	797 (800-2 3/4)	
	Knots	60	90	120	150	180
	Min:Sec	4:18	2:52	2:09	1:43	1:26

SC-4, 15 MAY 2025 to 12 JUN 2025

SC-4, 15 MAY 2025 to 12 JUN 2025